

## National avalanche bulletin no. 131

from Saturday, 7 April 2007, 18:30 hours

### *Increase of avalanche danger through daytime warming*

#### Current conditions

Saturday was sunny and mild in the Swiss Alps. The midday temperature at 2000 m was plus 4 degrees. Light winds prevailed.

The snow line on north facing slopes is generally between 1400 m and 1600 m. On south facing slopes it is generally between 1600 m and 2000 m, in the Engadine between 2000 m and 2400 m.

In the inneralpine regions of Grisons the snowpack fundament on north facing slopes is often weak. The high mountains have had lots of snow, particularly in western and northern regions. Especially in central Valais, Grisons and the Engadine, however, there is relatively little snow on the glaciers. The glacier crevasses in many places have only thin, usually hard snowbridges.

#### Short-term development

On Saturday night it will be partly overcast. This will reduce the formation of crusts on the snowpack surface. On Easter Sunday it will clear up quickly in the morning and thereafter be predominantly sunny, with precipitation clouds forming in the afternoon. The midday temperature at 2000 m is plus 4 degrees in western and southern regions, plus 2 degrees in eastern regions. Light northwesterly winds will prevail.

Through the radiation and daytime cycle of warming, the snowpack will lose its strength, particularly on steep sunny slopes. In case of markedly reduced radiation during the night, the effect will be felt already in the morning hours.

#### Avalanche danger forecast for Easter Sunday

Northern main Alpine ridge with the exception of the regions Alpstein-Alvier and Liechtenstein; also the Valais and Grisons except for the southern valleys of Grisons:

##### *Moderate Avalanche Danger (Level 2)*

The avalanche prone locations are primarily on northwest to north to northeast facing steep slopes above approximately 2500 m. In the indicated regions along the northern flank of the Alps as well as in the upper Vispertäler and the southern Simplon region, the snowdrift of this week can still be released on isolated steep north facing slopes, for the most part through high additional loading. Particularly in the inneralpine regions of Grisons, isolated avalanches in the old snow cover can still be triggered.

Especially in the indicated aspects and altitude zones, maintaining distances between persons and single descents are recommended.

Remaining regions along the northern flank of the Alps; southern flank of the Alps excluding the southern Simplon region:

##### *Low Avalanche Danger (Level 1)*

In all regions the danger of avalanches will rise in the course of the day. This applies to both dry, but particularly to wet avalanches. On steep sunny slopes below about 3000 m increasingly frequent moist snow slides can be expected. Below about 2600 m wet avalanches are also possible which, primarily in inneralpine regions, can break through to the ground. Along the northern flank of the Alps, in the Valais and in northern and central Grisons, the danger of wet avalanches will be augmented towards the level "considerable"

#### Trend for Monday and Tuesday

Following clear nights the days will turn sunny and mild. The danger of dry avalanches will continue to diminish. The danger of wet avalanches, however, will increase in the course of each day.

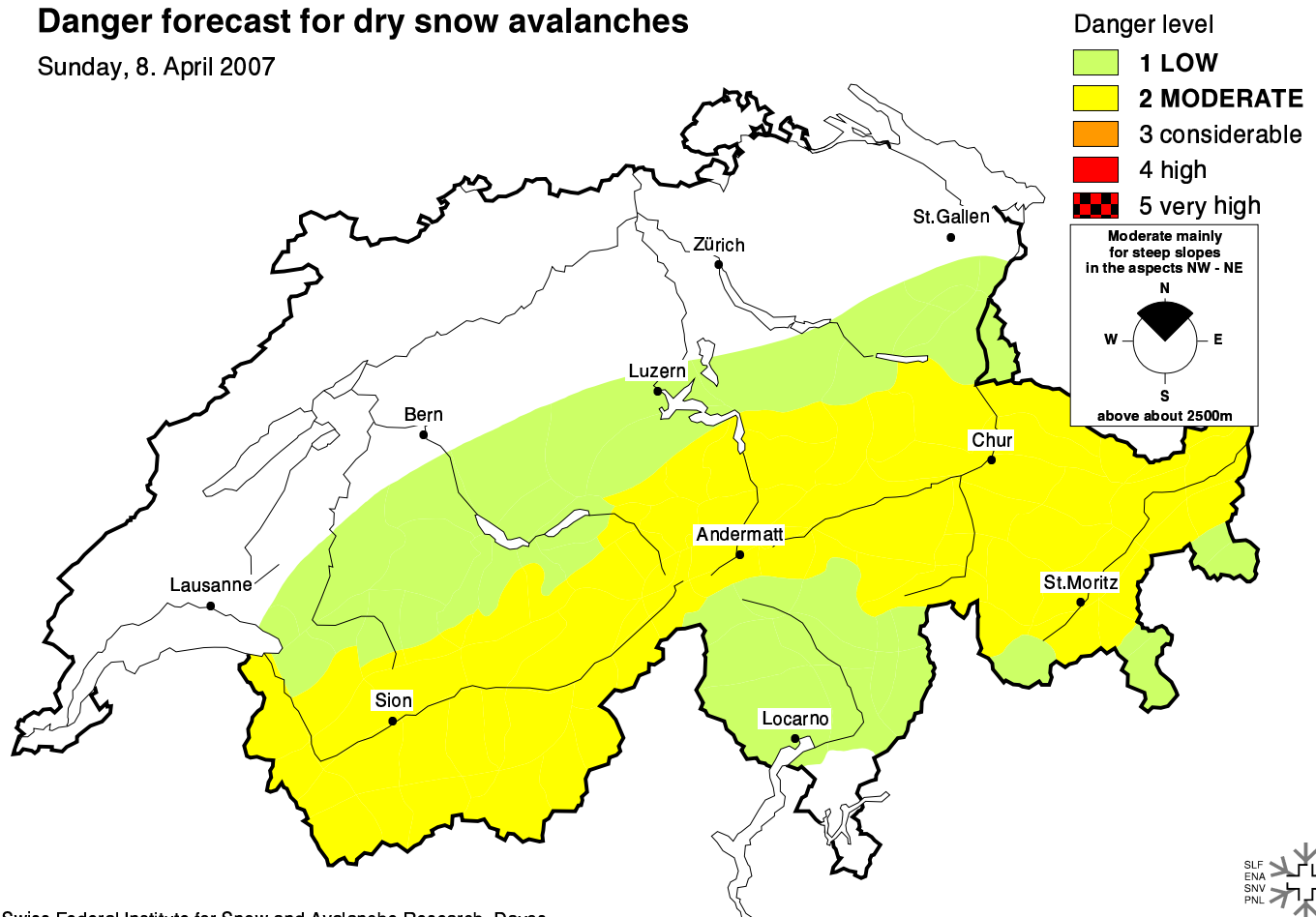
**Additional information:** 'Fax-on-demand' (CHF 1.49/min.)  
 0900 59 2020 List of fax aids SLF  
 0900 59 2025 Snow Depths Map (in case of major change)  
 0900 59 2026 New Snow Map daily  
 0900 162 338 Alpine Weather Report MeteoSwiss  
 (CHF 2./min.)  
 Weather Information in collaboration  
 with MeteoSwiss

**Regional avalanche bulletins** (CHF 1.49/min.)  
 0900 59 20 31 Central Switzerland  
 0900 59 20 32 Lower Valais / VD  
 0900 59 20 33 Upper Valais  
 0900 59 20 34 North and Central Grisons  
 0900 59 20 35 South Grisons  
 0900 59 20 36 Bernese Oberland  
 0900 59 20 37 Eastern Part of the Northern Slope of the Alps

**Feedback information:**  
 Free telephone: 0800 800 187  
 Free fax: 0800 800 188  
**Internet:** <http://www.slf.ch>  
**Email:** [lwp@slf.ch](mailto:lwp@slf.ch)  
**WAP:** [wap.slf.ch](http://wap.slf.ch)  
**Teletext:** Page 782 (SF DRS)

## Danger forecast for dry snow avalanches

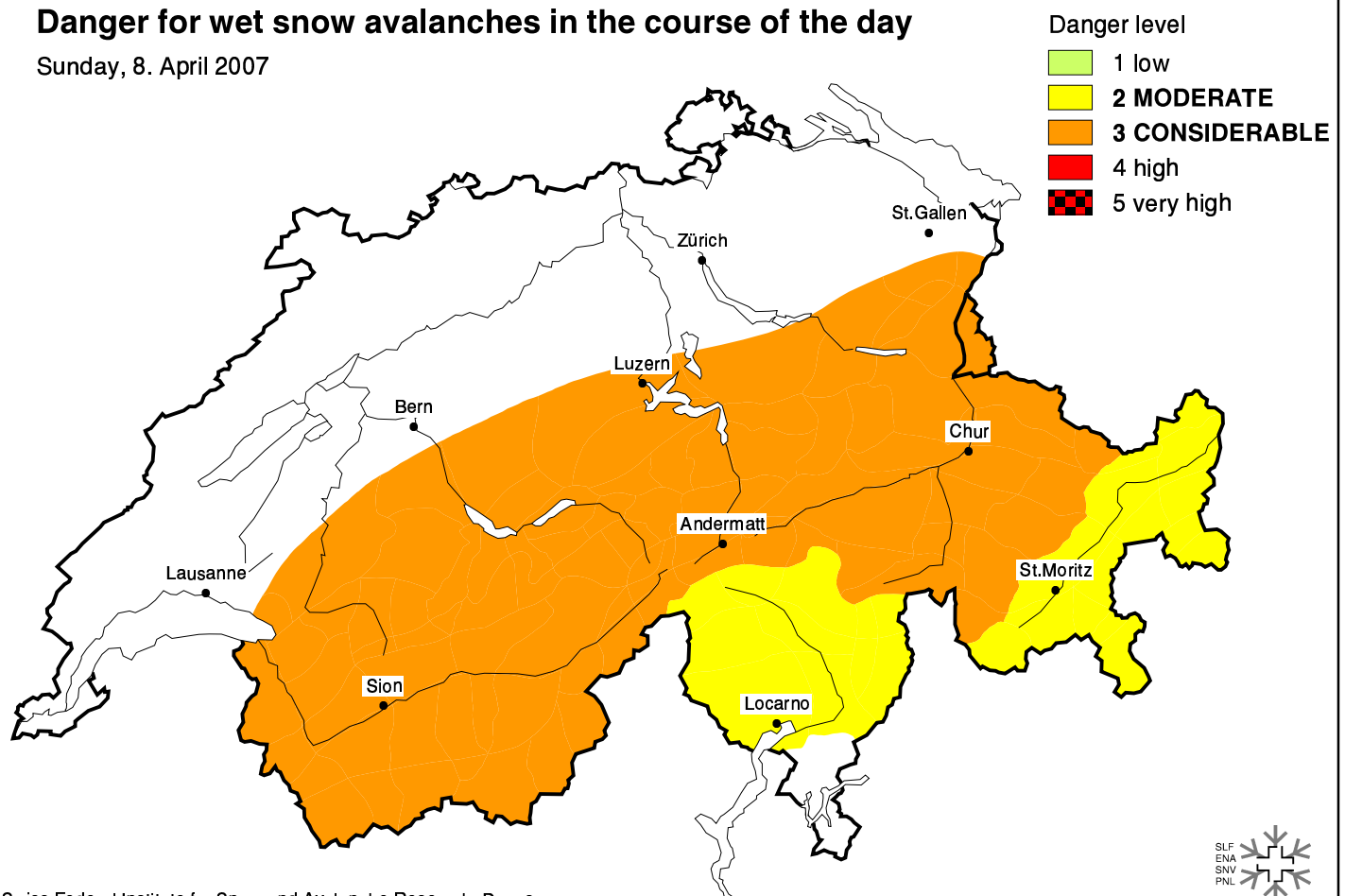
Sunday, 8. April 2007



Swiss Federal Institute for Snow and Avalanche Research, Davos

## Danger for wet snow avalanches in the course of the day

Sunday, 8. April 2007



Swiss Federal Institute for Snow and Avalanche Research, Davos