

## National avalanche bulletin no. 29

for Saturday, 12 December 2009

issue date 11.12.2009, 18:30 hours

### *Considerable avalanche danger in some parts of the eastern regions*

#### Current conditions

On Friday along the southern flank of the Alps, in the Valais and in the Upper Engadine, it was predominantly sunny, in the remaining regions overcast. There was 10 to 20 cm of snowfall in the central and eastern parts of the northern flank of the Alps as well as in the Prättigau, locally as much as 30 cm. The midday temperatures at 2000 m were minus 5 degrees in northern regions and minus 2 degrees in southern regions. A light to moderate northerly wind was blowing. The winds were exceedingly gusty in the central part of the Main Alpine Ridge and in the Upper Engadine in particular.

On shade covered slopes above approximately 2200 m, particularly in regions north of the Main Alpine Ridge, the layers of snow nearest to the ground are weak. Due to the markedly lower temperatures, the old snowpack is consolidating well, especially below about 2200 m.

#### Short-term development

On Saturday it will be heavily overcast far and wide and intermittent snowfall is anticipated. In the central and eastern parts of the northern flank of the Alps as well as in the Prättigau, 10 to 20 cm of snowfall is expected, in the remaining regions less. Along the southern flank of the Alps and in the Engadine, it will be variably cloudy. The midday temperatures at 2000 m will be minus 8 degrees in northern regions and minus 6 degrees in southern regions. On Friday night, the wind will shift direction to northeasterly, then slacken off in velocity. Along the Prealps, the bise wind will gain in strength and increase to moderate velocity during the afternoon.

#### Avalanche danger forecast for Saturday

Northern flank of the Alps east of the Reuss; northern Grisons; Upper Engadine:

##### *Considerable avalanche danger (Level 3)*

On the northern flank of the Alps east of the Reuss and in northern Grisons, the avalanche prone locations are to be found on steep slopes in all expositions above approximately 2000 m. Slab avalanches can be triggered even by a single ski tourer or freerider. Trigger sensitive snowdrift accumulations are being blanketed over with fresh snow, making them nearly impossible to recognize. For the reason, it is exceedingly difficult to assess the avalanche danger and necessitates both caution and experience.

In the Upper Engadine, the avalanche prone locations are to be found primarily on wind loaded slopes of eastern to southern to western expositions above approximately 2400 m. In places which tend to have a shallow snowpack and in transition areas from broad ridges into gullies and bowls, avalanches can easily be triggered. Cautious route selection is essential.

Remaining northern flank of the Alps; Valais; Ticino; central Grisons; Lower Engadine; southern valleys of Grisons:

##### *Moderate avalanche danger (Level 2)*

The avalanche prone locations are to be found in all expositions above approximately 2200 m. In the central part of the Main Alpine Ridge, in Ticino, in the southern Simplon region, in Val Calanca, in Val Moesa and in the Puschlav, the avalanche prone locations are to be found primarily on wind loaded slopes. The layers of snowdrift are moderately well consolidated; they can be triggered primarily through large additional loading.

In the remaining regions of this danger level, the avalanche prone locations are to be found on steep slopes. On shade-covered slopes, avalanches can in isolated cases be released in the weak old snowpack. In addition, the snowdrift accumulations in these areas, which are particularly plentiful in gullies and bowls, must be critically evaluated.

Prudent route planning is important.

#### Trend for Sunday and Monday

##### National avalanche bulletin as an MMS (Fr. 0.50/MMS)

Send an SMS with the corresponding key word to the speed dial number 162.

LAWINE overview of the keywords  
LAWCHD national avalanche bulletin (german)

Weather Information in collaboration with **MeteoSwiss**

0900 162 138 / 338 Alpine Weather Report MeteoSwiss phone/fax  
(phone: CHF 1.20/min) (fax: CHF 2.--/min)

##### Regional avalanche bulletins (Fr. 0.50/MMS)

LAWZCH Central Switzerland  
LAWBVS Lower Valais / VD  
LAWOVS Upper Valais  
LAWNGR North and Central Grisons  
LAWSGR South Grisons  
LAWBEO Bernese Oberland  
LAWEAN Eastern Part of the Northern Slope of the Alps

**Internet:** <http://www.slf.ch>

**WAP:** [wap.slf.ch](http://wap.slf.ch)

**Teletext:** Page 782 (SF DRS)

**Phone:** 187 (Fr. 0.50/call and min)

**Feedback information:**

Email: [lwp@slf.ch](mailto:lwp@slf.ch)

Free phone/fax: 0800 800 187 / 88

On Sunday it will be heavily overcast in most places and some snowfall is anticipated in southern regions in particular. On Monday it will be variably cloudy, accompanied by sunshine especially in southern regions. Due to the bise winds it will remain cold. The avalanche danger will slowly recede.

**National avalanche bulletin as an MMS (Fr. 0.50/MMS)**

Send an SMS with the corresponding key word to the speed dial number 162.

LAWINE overview of the keywords  
LAWCHD national avalanche bulletin (german)

Weather Information in collaboration with **MeteoSwiss**

0900 162 138 / 338 Alpine Weather Report MeteoSwiss phone/fax  
(phone: CHF 1.20/min) (fax: CHF 2.--/min)

**Regional avalanche bulletins (Fr. 0.50/MMS)**

LAWZCH Central Switzerland  
LAWBVS Lower Valais / VD  
LAWOVS Upper Valais  
LAWNGR North and Central Grisons  
LAWSGR South Grisons  
LAWBEO Bernese Oberland  
LAWEAN Eastern Part of the Northern Slope of the Alps

**Internet:** <http://www.slf.ch>

**WAP:** [wap.slf.ch](http://wap.slf.ch)

**Teletext:** Page 782 (SF DRS)

**Phone:** 187 (Fr. 0.50/call and min)

**Feedback information:**

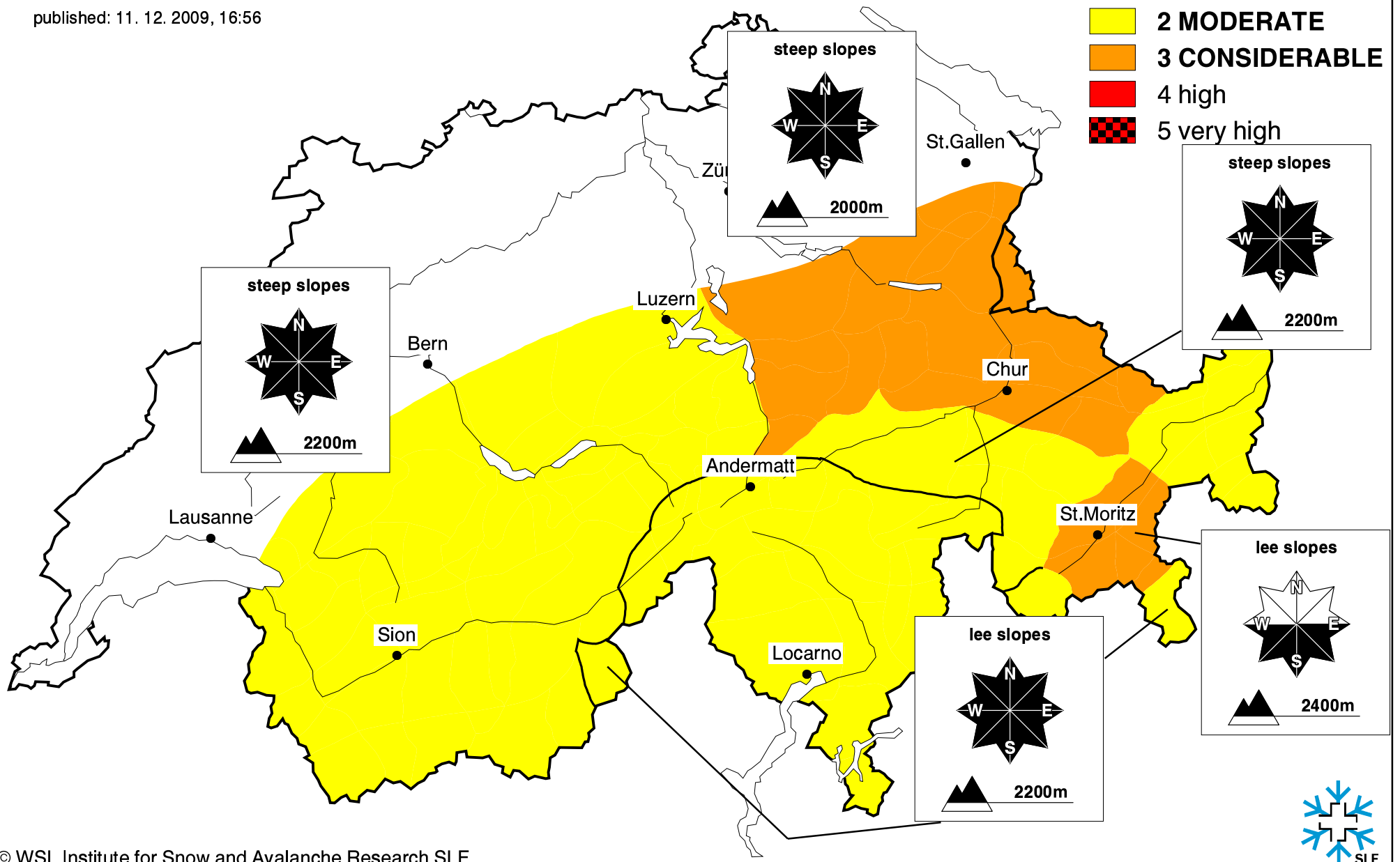
Email: [lwp@slf.ch](mailto:lwp@slf.ch)

Free phone/fax: 0800 800 187 / 88

# Avalanche danger forecast

for Saturday, 12. December 2009

published: 11. 12. 2009, 16:56








# Avalanche danger forecast

for Saturday, 12. December 2009

published: 12. 12. 2009, 07:57

Danger level

-  1 low
-  **2 MODERATE**
-  **3 CONSIDERABLE**
-  4 high
-  5 very high

