

National avalanche bulletin no. 85

for Tuesday, 1 February 2011

issue date 31.1.2011, 18:30 hours

Generally favourable avalanche situation

Current conditions

On Monday it was sunny in the mountains. In the western part of the main Alpine ridge, however, cloud built up from the south at times. The midday temperature at 2000 m was about minus 2 degrees. During the night the wind remained strong at times from the south, on the northern Alpine ridge in particular. During the day it was light to moderate from the east in all regions.

In many cases, the top layer of snow on shady slopes adjacent to the ridge line consists of the snow drift accumulations of recent days. Crusts are forming increasingly on the surface of very steep south facing slopes. Various layers, generally of different strength, exist deeper in the snowpack. Soft layers consisting of angular grains are most prevalent in the inneralpine regions. Fracture propagation in the old snowpack is, however, generally unlikely.

Short-term development

It will be sunny in all regions on Tuesday. Midday temperatures at 2000 m will be about minus 2 degrees. The easterly wind will be light to moderate.

Avalanche danger forecast for Tuesday

Northern Alpine ridge from Chablais to the Susten region, excluding northern Valais; central and eastern parts of the northern flank of the Alps excluding the Prealps; Gotthard region; northern Surselva; southern Surselva including Lugnez, Valsertal and Safiental; Flims-Untervaz; Schanfigg; Domleschg- Lenzerheide; Schams:

Moderate avalanche danger (level 2)

Avalanche prone locations are to be found, in particular, on southwest to north to east facing aspects. In the relevant regions on the northern flank of the Alps excluding the Gotthard region, they are to be found, in particular, on wind-loaded slopes above approximately 2000 m. In the other regions subject to this danger level, they are to be found, in particular, on steep slopes above approximately 2400 m. The snow drift accumulations of recent days are to be found, in particular, in areas adjacent to the ridge line and pass areas, and in gullies and bowls. They can still be released easily in some cases, but are generally small.

In addition, isolated avalanches can be released in deeper layers of the snowpack by large additional loads in particular, especially in the relevant regions of Grisons. This danger exists, in particular, in very steep terrain where the snowpack is shallow, at transitions into gullies and bowls for example.

Northern flank of the Alps north of the northern Alpine ridge; Valais excluding the Chablais and Obergoms regions; Ticino excluding the Gotthard region; rest of central Grisons; Prättigau; Davos region; Engadine; Grisons southern valleys:

Low avalanche danger (level 1)

Isolated avalanche prone locations are to be found, in particular, in shady, extremely steep terrain at high altitudes. Here in particular, snow drift accumulations are to be avoided and due regard should also be paid to the danger of avalanches sweeping people along and giving rise to falls. In rare cases, avalanches can penetrate the old snow cover, in the inneralpine regions of Valais in particular.

The prevalence of the avalanche prone locations and the quantities of snow that can be released increase with altitude, in keeping with the effect of the wind. The danger is a little greater, therefore, at higher altitudes.

Trend for Wednesday and Thursday

The weather will be mostly sunny on Wednesday, but cloudbanks will pass over from the northwest on Thursday. Temperatures are likely to fall a little. The avalanche danger will decrease slowly.

National avalanche bulletin as an MMS (Fr. 0.50/MMS)

Send an SMS with the corresponding key word to the speed dial number 162.

LAWINE overview of the keywords
LAWCHD national avalanche bulletin (german)

Weather Information in collaboration with **MeteoSwiss**

0900 162 138 / 338 Alpine Weather Report MeteoSwiss phone/fax
(phone: CHF 1.20/min) (fax: CHF 2.--/min)

Regional avalanche bulletins (Fr. 0.50/MMS)

LAWZCH Central Switzerland
LAWBVS Lower Valais / VD
LAWOVS Upper Valais
LAWNGR North and Central Grisons
LAWSGR South Grisons
LAWBEO Bernese Oberland
LAWEAN Eastern Part of the Northern Slope of the Alps

Internet: <http://www.slf.ch>

WAP: wap.slf.ch

Teletext: Page 782 (SF DRS)

Phone: 187 (Fr. 0.50/call and min)

Feedback information:

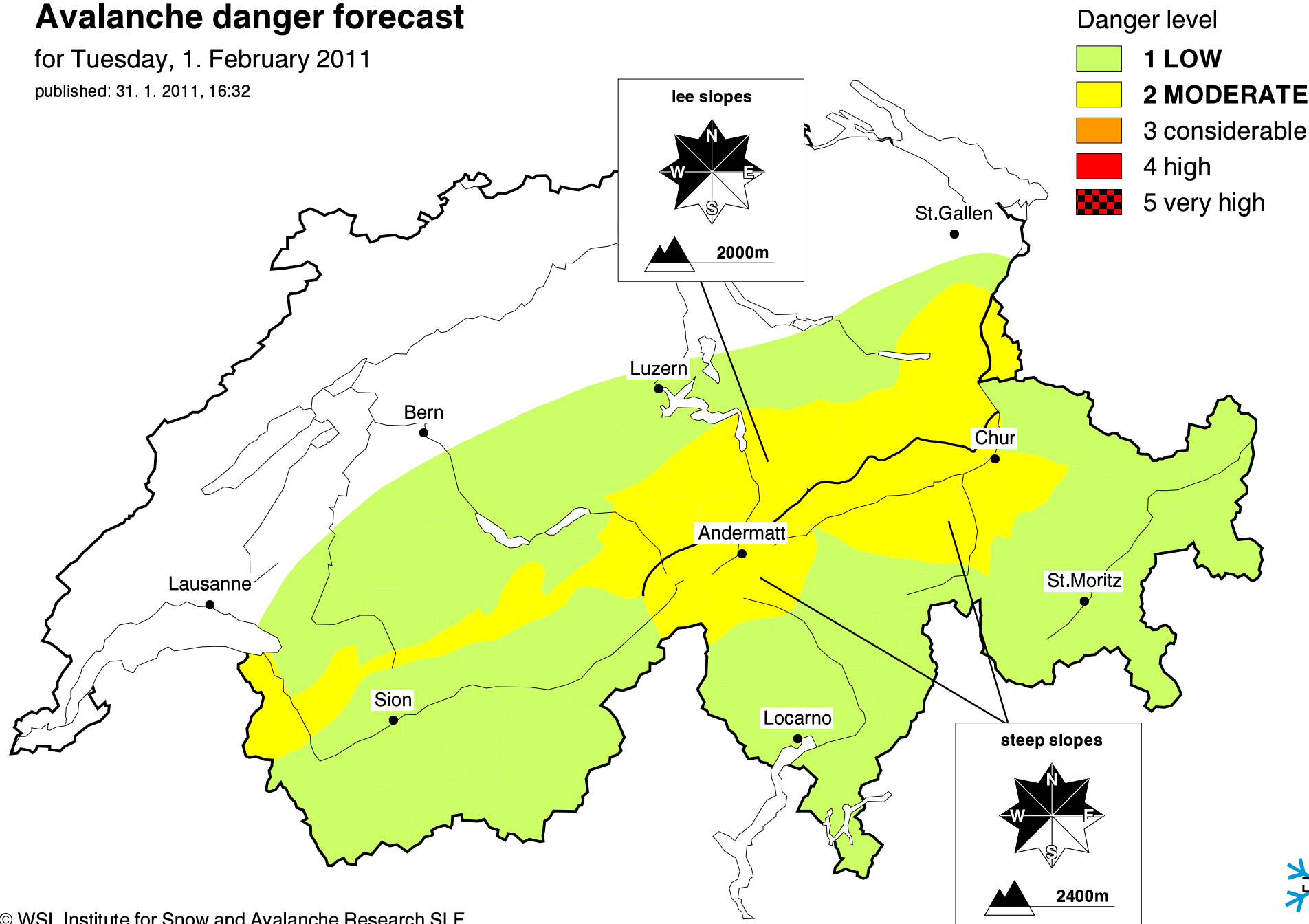
Email: lwp@slf.ch

Free phone/fax: 0800 800 187 / 88

Avalanche danger forecast

for Tuesday, 1. February 2011

published: 31. 1. 2011, 16:32



Avalanche danger forecast

for Tuesday, 1. February 2011

published: 1. 2. 2011, 07:50

