

National avalanche bulletin no. 86

for Wednesday, 2 February 2011

issue date 1.2.2011, 18:30 hours

Moderate and low avalanche danger

Current conditions

After a clear night, Tuesday was sunny in the mountains. Midday temperatures at 2000 m were about minus 3 degrees in the southwest and 0 degrees in the northeast. The southerly to easterly wind was occasionally moderate at high altitudes.

In many cases, the top layer of snow on shady slopes adjacent to the ridge line consists of the snow drift accumulations of recent days. Up to high altitudes, crusts are forming increasingly on the surface of very steep south facing slopes. In particular in the inneralpine regions of Valais and in Grisons, weak layers are prevalent in the snowpack, but they are covered with more consolidated layers. Fracture propagation in the old snowpack is generally likely only in isolated cases.

Short-term development

It will be sunny in all regions on Wednesday. Midday temperatures at 2000 m will be about minus 3 degrees. The wind will become northeasterly and be moderate to strong at high altitudes. Fresh small snow drift accumulations will form at high altitudes.

Avalanche danger forecast for Wednesday

Northern Alpine ridge excluding northern Valais; in addition, Gotthard region; southern Surselva including Lugnez, Valsertal and Safiental; Domleschg- Lenzerheide; Schams:

Moderate avalanche danger (level 2)

Avalanche prone locations are to be found, in particular, in southwest to north to east facing aspects. In the relevant regions on the northern flank of the Alps excluding the Gotthard region, they are to be found, in particular, on wind-loaded slopes above approximately 2000 m. In the other regions subject to this danger level, they are to be found on steep slopes above approximately 2400 m. The snow drift accumulations are to be found, in particular, in areas adjacent to the ridge line and pass areas, and in gullies and bowls. They can be released easily in some cases, but are generally small.

In addition, in the relevant regions of Grisons, isolated avalanches can be released in deeper layers of the snowpack by large additional loads in particular. This danger exists, in particular, in very steep terrain where the snowpack is fairly shallow, at transitions into bowls and gullies for example.

Northern flank of the Alps north of the northern Alpine ridge; Valais excluding the Chablais and Obergoms regions; Ticino excluding the Gotthard region; rest of central Grisons; northern Grisons excluding Flims-Untervaz; Engadine; Grisons southern valleys:

Low avalanche danger (level 1)

Isolated avalanche prone locations are to be found, in particular, in shady, extremely steep terrain at high altitudes. Here in particular, older snow drift accumulations must be evaluated with care and prudence. When selecting a route, moreover, due regard should also be paid to the danger of even small slides sweeping people along and giving rise to falls. In very isolated cases, fractures can also penetrate deeper layers of the snowpack if exposed to large loads.

Trend for Thursday and Friday

During Thursday, cloud will build up from the north. On Thursday night, a few centimetres of snow will fall on the southern flank of the Alps and in northern Grisons. On Friday, the weather will brighten up again everywhere and become milder. The avalanche danger will not change significantly.

National avalanche bulletin as an MMS (Fr. 0.50/MMS)

Send an SMS with the corresponding key word to the speed dial number 162.

LAWINE overview of the keywords
LAWCHD national avalanche bulletin (german)

Weather Information in collaboration with **MeteoSwiss**

0900 162 138 / 338 Alpine Weather Report MeteoSwiss phone/fax
(phone: CHF 1.20/min) (fax: CHF 2.--/min)

Regional avalanche bulletins (Fr. 0.50/MMS)

LAWZCH Central Switzerland
LAWBVS Lower Valais / VD
LAWOVS Upper Valais
LAWNGR North and Central Grisons
LAWSGR South Grisons
LAWBEO Bernese Oberland
LAWEAN Eastern Part of the Northern Slope of the Alps

Internet: <http://www.slf.ch>

WAP: wap.slf.ch

Teletext: Page 782 (SF DRS)

Phone: 187 (Fr. 0.50/call and min)

Feedback information:

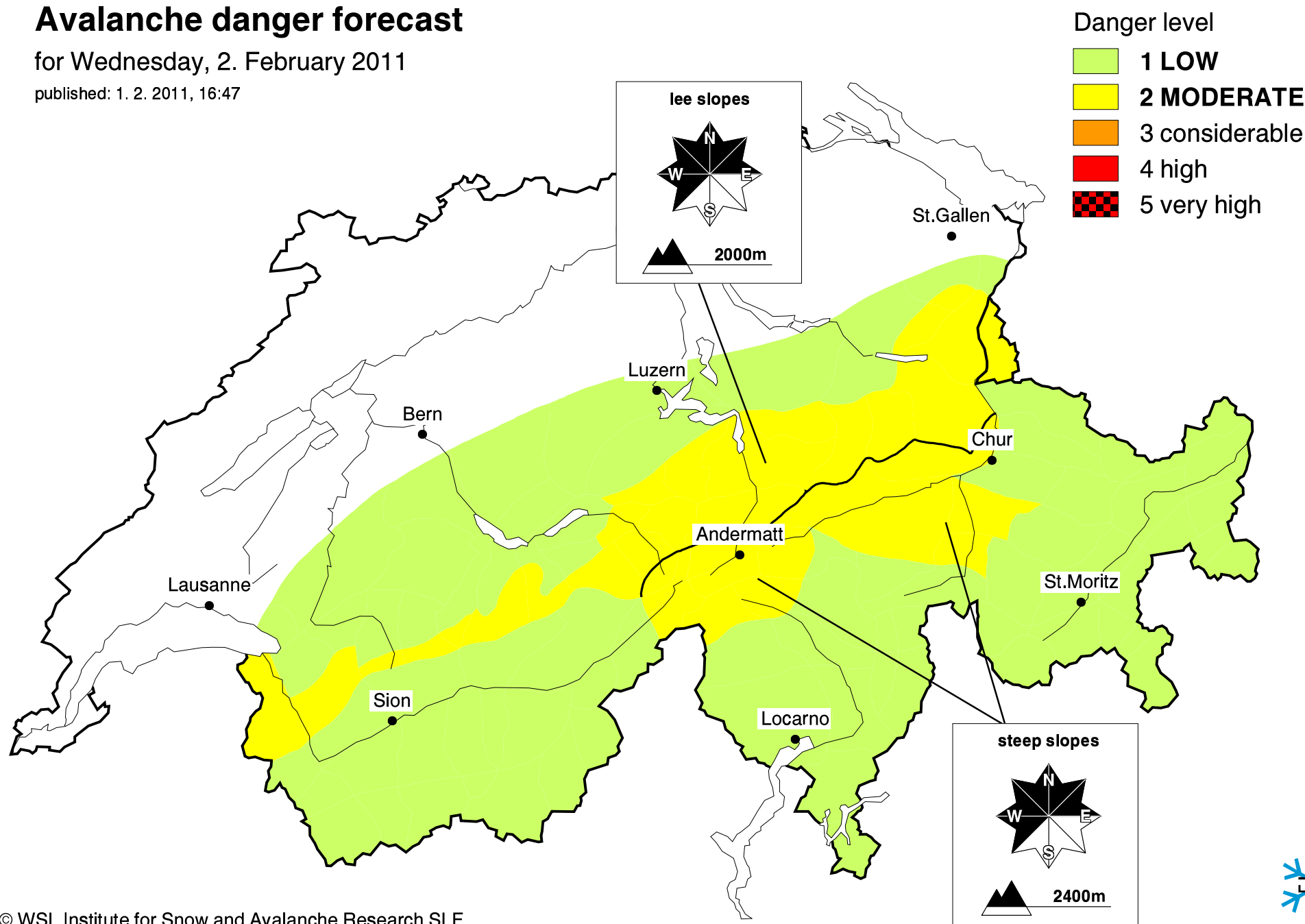
Email: lwp@slf.ch

Free phone/fax: 0800 800 187 / 88

Avalanche danger forecast

for Wednesday, 2. February 2011

published: 1. 2. 2011, 16:47



Avalanche danger forecast

for Wednesday, 2. February 2011

published: 2. 2. 2011, 07:34

