

National avalanche bulletin no. 168

for Easter Monday, 25 April 2011

issue date 24.4.2011, 18:30 hours

Nighttime skies increasingly clear, generally favourable avalanche situation in early morning

Current conditions

On Easter Sunday it was intermittently sunny in parts of Grisons and in Sotto Ceneri; in the remaining regions predominantly overcast. The midday temperatures at 2000 m were plus 4 degrees in northern regions and plus 6 degrees in southern regions. The wind was blowing at light velocity in the mountains.

On north facing slopes, the snowlines are 1800 m widespread; in the Valais the snowline is for the most part at 2000 m. On south facing slopes, the snowlines lie between 2000 and 2400 m.

The snowpack surface above approximately 2800 m on north facing slopes is still powdery in some places, or bearing the mark of last Friday's southeasterly winds. Lying on top of the snowpack surface on slopes in the other expositions at high altitudes, there is usually a crust which softens up over the course of the day.

Short-term development

On Sunday night the skies will be increasingly clear widespread, in Grisons predominantly overcast. During the day on Easter Monday, the sun will be shining in most regions. During the afternoon, isolated showers or thunderstorms are possible from place to place. Above approximately 2500 m, precipitation which falls as snow is anticipated, below that altitude as rain. The midday temperature at 2000 m will be plus 6 degrees. The wind will be blowing from northeasterly directions at moderate velocity in the Prealps more than anywhere else, elsewhere at relatively light strength.

The snowpack surface is favourably consolidated during the early morning hours, except on north facing slopes at higher altitudes. During the course of the day, it will lose its firmness in all expositions through solar radiation and daytime warming.

Avalanche danger forecast for Easter Monday

Northern flank of the Alps, not including Prealps, from the Mönch to the Säntis; northern Grisons:

Moderate danger of dry avalanches (Level 2)

The avalanche prone locations are to be found primarily on steep slopes of western to northern to northeastern exposition above approximately 2800 m. The freshly formed, relatively small sized snowdrift accumulations should be evaluated with special caution. In addition, avalanches can in isolated cases be triggered from more deeply embedded layers in the snowpack. For that reason, a prudent route selection is important, particularly on steep slopes in the indicated expositions at high altitudes.

Remaining regions of the Swiss Alps:

Low danger of dry avalanches (Level 1)

Isolated avalanche prone locations are to be found primarily on steep, north facing slopes. Particularly in the southern sector of the Valais and the inneralpine regions of Grisons, avalanches can fracture in more deeply embedded layers inside the old snowpack in isolated cases.

Danger of wet avalanches:

Throughout the Swiss Alps not including the Prealps, the danger of wet avalanches will rise to Danger Level 2, "moderate", over the course of the morning. Below about 3000 m, isolated wet snowslides and wet snow avalanches are possible. Ascents to huts and backcountry ski tours should be terminated in sufficient time. In the Prealps, the danger will remain "low" (Level 1), due to the lack of snow. However, in isolated cases, small sized wet snowslides are also possible.

Trend for Tuesday and Wednesday

On Tuesday it will be predominantly sunny and somewhat cooler in all regions, accompanied by moderate velocity bise winds in northern regions. On Wednesday the weather conditions will be variable. Isolated showers and thunderstorms are possible, particularly during the afternoon hours. The avalanche danger is expected to increase either earlier or later in the course of the day, depending on the degree of nocturnal outgoing radiation.

National avalanche bulletin as an MMS (Fr. 0.50/MMS)

Send an SMS with the corresponding key word to the speed dial number 162.

LAWINE overview of the keywords
LAWCHD national avalanche bulletin (german)

Weather Information in collaboration with **MeteoSwiss**

0900 162 138 / 338 Alpine Weather Report MeteoSwiss phone/fax
(phone: CHF 1.20/min) (fax: CHF 2.--/min)

Regional avalanche bulletins (Fr. 0.50/MMS)

-- Central Switzerland
-- Lower Valais / VD
-- Upper Valais
-- North and Central Grisons
-- South Grisons
-- Bernese Oberland
-- Eastern Part of the Northern Slope of the Alps

Internet: <http://www.slf.ch>

WAP: wap.slf.ch

Teletext: Page 782 (SF DRS)

Phone: 187 (Fr. 0.50/call and min)

Feedback information:

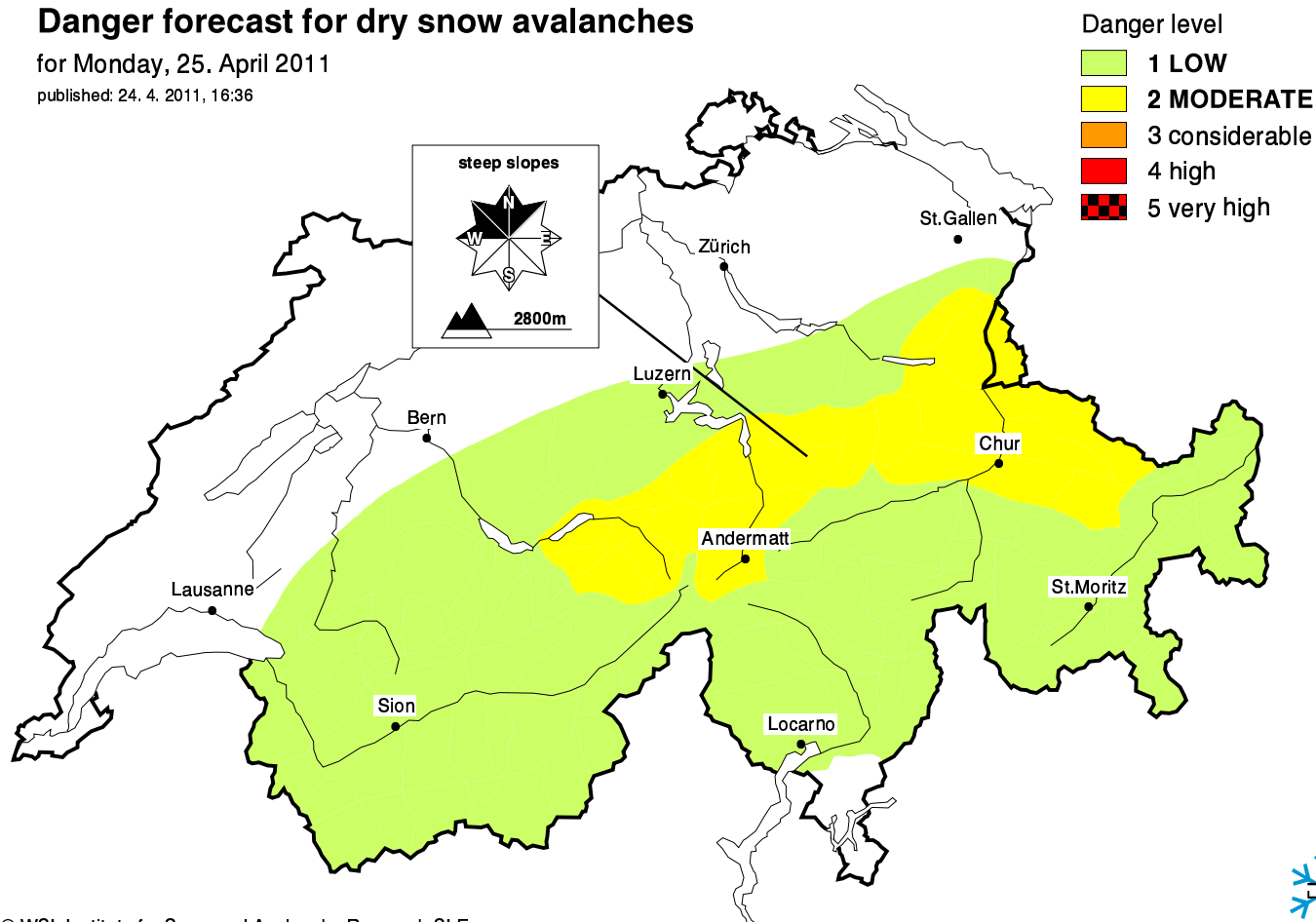
Email: lwp@slf.ch

Free phone/fax: 0800 800 187 / 88

Danger forecast for dry snow avalanches

for Monday, 25. April 2011

published: 24. 4. 2011, 16:36



Danger of wet snow avalanches in the course of the day

for Monday, 25. April 2011

