

National avalanche bulletin no. 30

for Sunday, 25 December 2011

issue date 24.12.2011, 18:30 hours

Avalanche danger is considerable widespread

Current conditions

On Christmas Eve there was 15 to 30 cm of snowfall on the northern flank of the Alps and in northern Valais; in the remaining Valais and in northern and central Grisons, 5 to 15 cm. Further to the south the snowfall was less or it remained dry. In the furthest south, there were brief intervals of sunshine. The northerly wind was blowing intermittently at storm strength, and transported the new fallen snow as well as the old snow. The midday temperature at 2000 m was minus 8 degrees.

The deep layers of fresh fallen snow from the week drawing to a close are consolidating and stabilising. They are frequently overlaid with freshly formed snowdrift masses which can be easily triggered. On the Main Alpine Ridge above approximately 2500 m, the lowermost layers of the snowpack are faceted and inadequately bonded in places.

Short-term development

During the night of Christmas Eve in eastern regions, a bit of additional snowfall is anticipated. During the day on Christmas Day it will be predominantly sunny in western and southern regions. In eastern regions it will remain heavily overcast in general, with intermittent bright spells. The wind will gradually slacken off during the afternoon and be blowing at light to moderate velocity from the northeast. The midday temperature at 2000 m will be about minus 6 degrees.

Avalanche danger forecast for Christmas Day

Northern flank of the Alps not including Prealps; Valais not including southern Simplon region; northern Ticino; northern and central Grisons; Engadine; northern Val Moesa and northern Val Calanca:

Considerable avalanche danger (Level 3)

The avalanche prone locations are to be found in all aspects above approximately 2000 m. In the indicated regions of the Main Alpine Ridge from Great St. Bernard to the Bernina Pass as well as in northern Ticino, the danger zones are to be found on steep slopes. Freshly formed snowdrift accumulations can easily be triggered by a single backcountry skier or freerider. In addition, triggerings in the most deeply embedded layers of the snowpack are possible in some places, particularly on steep, north facing slopes above approximately 2500 m with relatively shallow snow. Such avalanches can attain medium size. Caution and experience in evaluating the avalanche dangers are essential in outlying terrain away from secured ski runs.

In the remaining regions of this danger level, the avalanche prone locations are to be found primarily on wind loaded slopes. Freshly formed snowdrift accumulations can be easily triggered and should be avoided.

Prealps; southern Simplon region; central Ticino; Sotto Ceneri; southern Val Moesa and southern Val Calanca; Bergell; Puschlav; Münstertal:

Moderate avalanche danger (Level 2)

The avalanche prone locations are to be found primarily on wind loaded slopes in all aspects above approximately 1800 m. Freshly formed and older snowdrift accumulations should be evaluated critically. A cautious route selection is important.

In all regions of the Swiss Alps, particularly on the northern flank of the Alps, in the Valais and in northern Grisons, full depth snowslides and full depth avalanches can be expected below about 2200 m. They can release with particular ease on steep, south facing grassy slopes and roadside embankments.

Trend for Boxing Day and Tuesday

On both days it will be predominantly sunny. By Tuesday, the freezing level is expected to ascend to over 3000 m. The avalanche danger will decrease.

National avalanche bulletin as an MMS (Fr. 0.50/MMS)

Send an SMS with the corresponding key word to the speed dial number 162.

LAWINE overview of the keywords
LAWCHD national avalanche bulletin (german)

Weather Information in collaboration with **MeteoSwiss**

0900 162 138 / 338 Alpine Weather Report MeteoSwiss phone/fax
(phone: CHF 1.20/min) (fax: CHF 2.--/min)

Regional avalanche bulletins (Fr. 0.50/MMS)

LAWZCH Central Switzerland
LAWBVS Lower Valais / VD
LAWOVS Upper Valais
LAWNGR North and Central Grisons
LAWSGR South Grisons
LAWBEO Bernese Oberland
LAWEAN Eastern Part of the Northern Slope of the Alps

Internet: <http://www.slf.ch>

WAP: wap.slf.ch

Teletext: Page 782 (SF DRS)

Phone: 187 (Fr. 0.90/call and min)

Feedback information:

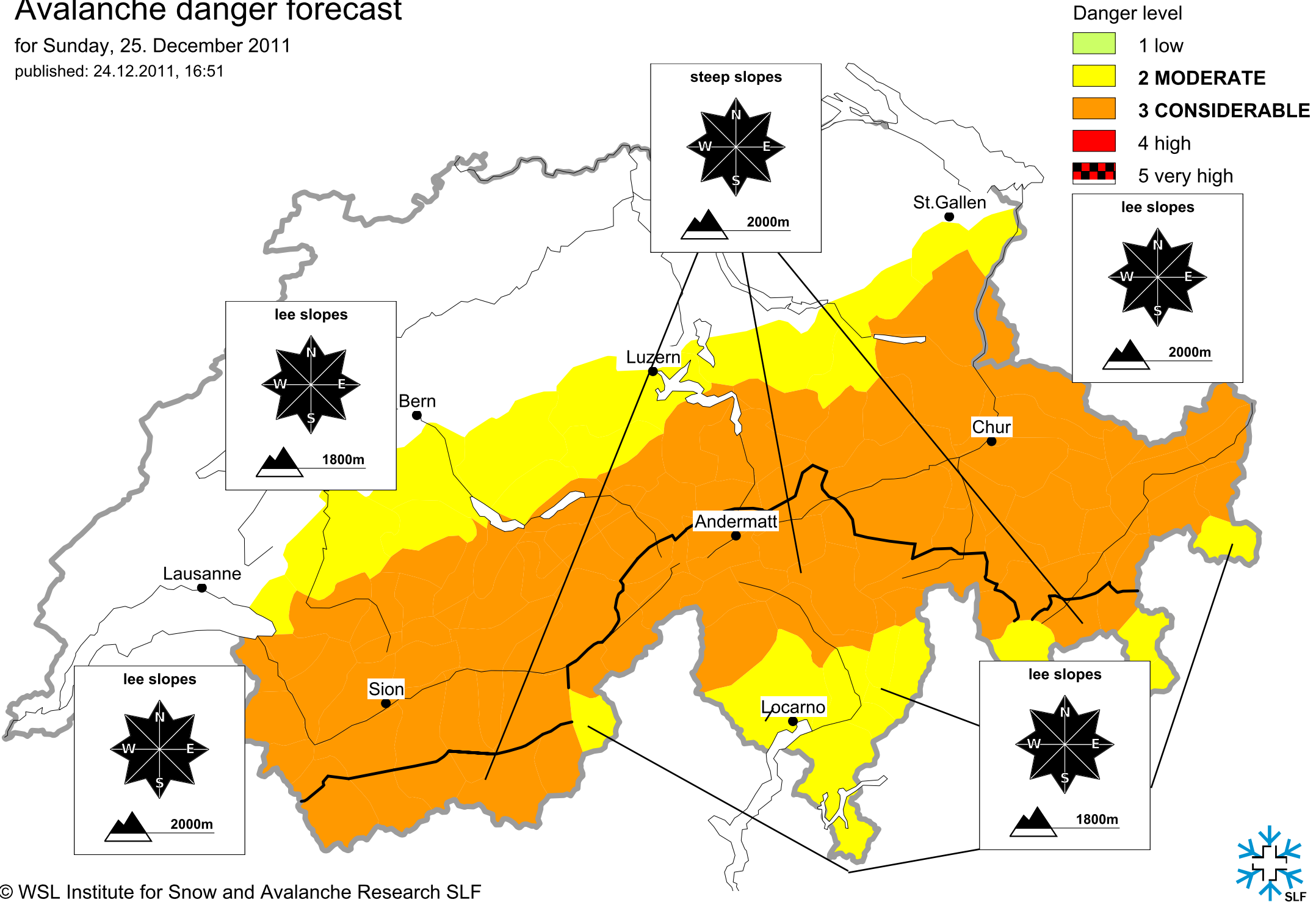
Email: lwp@slf.ch

Free phone/fax: 0800 800 187 / 88

Avalanche danger forecast

for Sunday, 25. December 2011

published: 24.12.2011, 16:51



Avalanche danger forecast

for Sunday, 25. December 2011

published: 25.12.2011, 07:59

