

# National avalanche bulletin no. 31

for Monday, 26 December 2011

issue date 25.12.2011, 18:30 hours

## *Considerable avalanche danger widespread*

### Current conditions

During the night of Christmas Eve in the Glarner Alps, the snowfall in this period of precipitation came to an end. Thus, since Christmas Eve on the northern flank of the Alps and in northern Valais, there has been 15 to 30 cm of snowfall; in the Glarner Alps and in the Bernese Oberland, as much as 40 cm of new fallen snow regionally. Further to the south, there was markedly less snowfall. The wind was blowing at moderate to strong velocity in the central and eastern parts of the Main Alpine Ridge in particular, leading to the transport of snow. The midday temperatures at 2000 m were minus 6 degrees in northern regions, minus 3 degrees in southern regions.

The snowdrift which accumulated on Christmas Eve and Christmas Day can still be easily triggered in places. Particularly on the Main Alpine Ridge above approximately 2500 m, the lowermost layers of the snowpack are faceted and poorly consolidated in places.

### Short-term development

On Boxing Day it will be sunny, apart from high altitude cloudbanks in northern and central Grisons. The northeasterly wind will be blowing at light to moderate velocity. The midday temperature at 2000 m will rise to about plus 1 degree.

### Avalanche danger forecast for Boxing Day

Northern flank of the Alps not including Prealps; Valais not including southern Simplon region; northern Ticino; northern and central Grisons; Engadine; northern Val Moesa and northern Val Calanca:

#### *Considerable avalanche danger (Level 3)*

The avalanche prone locations are to be found in all aspects above approximately 2000 m. In the indicated regions of the Main Alpine Ridge from the Great St. Bernard into Avers, as well as in northern Ticino, in the region of Bivio and in the Upper Engadine, the danger zones are on steep slopes. In some places, freshly formed snowdrift accumulations can be easily triggered even by one single backcountry skier or freerider. In addition, triggerings in the most deeply embedded layers of the snowpack are possible. These avalanche prone locations are difficult to recognize. They are to be found primarily in spots with shallow snow on steep, north facing slopes above approximately 2500 m. Such avalanches can fracture over extensive surface areas and attain medium size. In outlying terrain away from secured ski runs, caution and experience in evaluating avalanche dangers are essential.

In the remaining regions of this danger level, the avalanche prone locations are to be found primarily on wind loaded slopes. Snowdrift accumulations can still be easily triggered in places and should be avoided.

Prealps; southern Simplon region; central Ticino; Sotto Ceneri; southern Val Moesa and southern Val Calanca; Bergell; Puschlav; Müntertal:

#### *Moderate avalanche danger (Level 2)*

The avalanche prone locations are to be found primarily on wind loaded slopes in all aspects above approximately 1800 m. Snowdrift accumulations should be evaluated critically. A cautious route selection is important.

In all regions of the Swiss Alps, particularly on the northern flank of the Alps, in the Valais and in northern Grisons, full depth snowslides and full depth avalanches are possible below about 2200 m. They can release with particular ease on steep, south facing grassy slopes and roadside embankments.

### Trend for Tuesday and Wednesday

It will be sunny on both days. The freezing level will be at 3000 m. The avalanche danger is expected to recede far and wide.

#### National avalanche bulletin as an MMS (Fr. 0.50/MMS)

Send an SMS with the corresponding key word to the speed dial number 162.

LAWINE overview of the keywords  
LAWCHD national avalanche bulletin (german)

Weather Information in collaboration with **MeteoSwiss**

0900 162 138 / 338 Alpine Weather Report MeteoSwiss phone/fax  
(phone: CHF 1.20/min) (fax: CHF 2.--/min)

#### Regional avalanche bulletins (Fr. 0.50/MMS)

LAWZCH Central Switzerland  
LAWBVS Lower Valais / VD  
LAWOVS Upper Valais  
LAWNGR North and Central Grisons  
LAWSGR South Grisons  
LAWBEO Bernese Oberland  
LAWEAN Eastern Part of the Northern Slope of the Alps

**Internet:** <http://www.slf.ch>

**WAP:** <wap.slf.ch>

**Teletext:** Page 782 (SF DRS)

**Phone:** 187 (Fr. 0.90/call and min)

**Feedback information:**

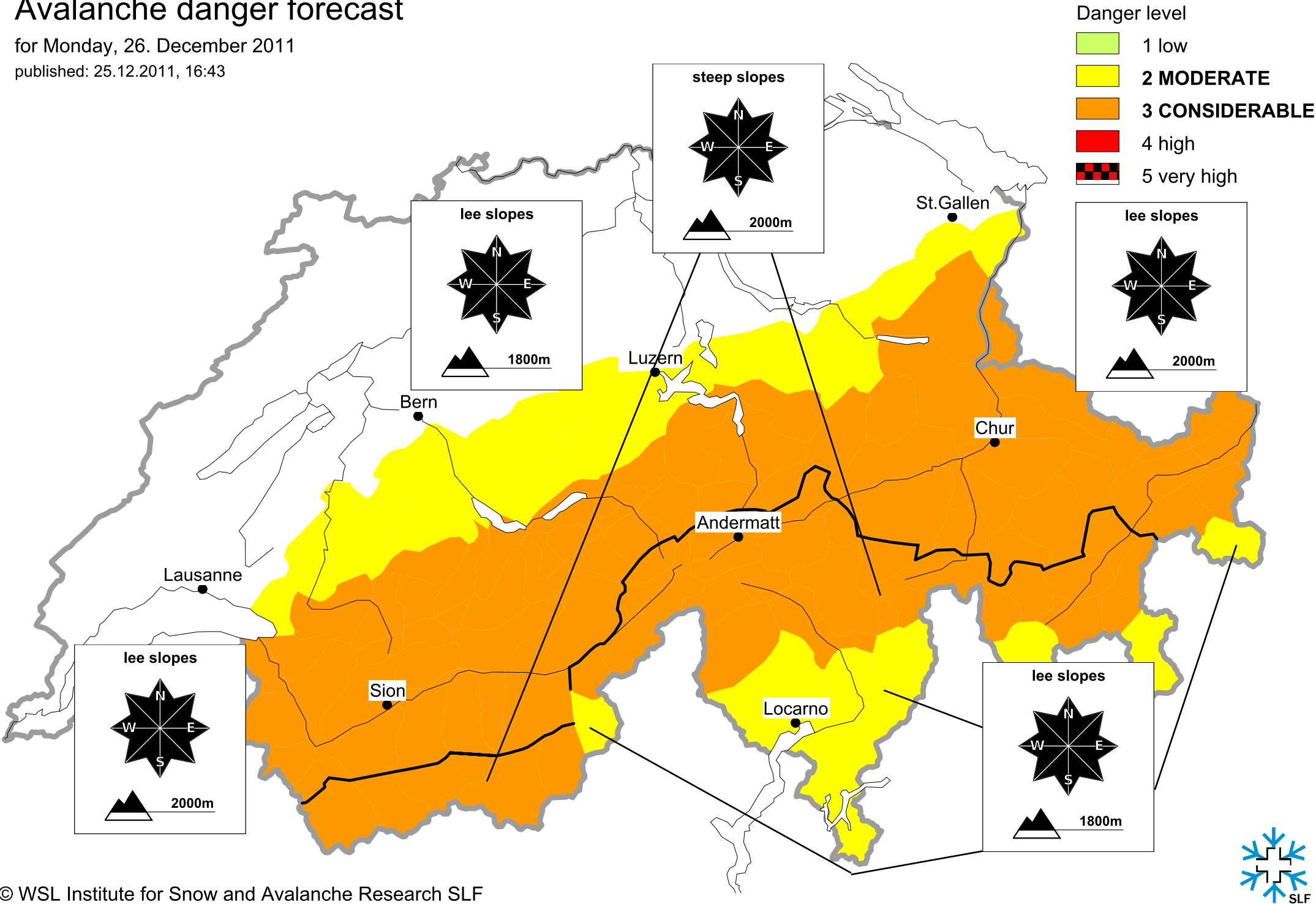
Email: [lwp@slf.ch](mailto:lwp@slf.ch)

Free phone/fax: 0800 800 187 / 88

# Avalanche danger forecast

for Monday, 26. December 2011

published: 25.12.2011, 16:43



# Avalanche danger forecast

for Monday, 26. December 2011

published: 26.12.2011, 07:46

