

National avalanche bulletin no. 33

for Wednesday, 28 December 2011

issue date 27.12.2011, 18:30 hours

Considerable avalanche danger in some regions

Current conditions

Tuesday was sunny. Midday temperatures at 2000 m were very mild in the north, at about plus 6 degrees, and about plus 2 degrees in the south. There was a light easterly wind.

The snow drift accumulations of recent days are still prone to triggering in some places. On the main Alpine ridge and in Upper Engadine in particular, the deepest layers of the snowpack are faceted and weakly bonded in some places above approximately 2500 m.

Short-term development

Wednesday will be sunny and remain mild. Midday temperatures at 2000 m will be about plus 3 degrees. The wind will be light to moderate from the southwest.

Avalanche danger forecast for Wednesday

Main Alpine ridge from Great St Bernhard to Zermatt and from the northern Simplon region to Avers; Bivio; Upper Engadine:

Considerable avalanche danger (level 3)

The avalanche prone locations are to be found, in particular, on northwest to north to east facing steep slopes above approximately 2400 m. Avalanches can be triggered in the weakly bonded old snow by a single winter sport participant. These can reach medium size. The avalanche prone locations are difficult to recognise; whumpfung sounds can give an indication of the danger. Caution is to be exercised in particular in areas where the snow cover is rather shallow. In addition, snow drift accumulations exist in all aspects, some of which are still prone to triggering. For those venturing off piste, caution and experience in the assessment of avalanche danger are required.

Northern flank of the Alps excluding the Gotthard region; remaining regions of Valais; northern Grisons; rest of central Grisons; Lower Engadine; remaining Grisons southern valleys; central and northern Ticino excluding the main Alpine ridge:

Moderate avalanche danger (level 2)

On the northern flank of the Alps excluding the Gotthard region, in northern Valais excluding the regions on the main Alpine ridge, and in northern Grisons, the avalanche prone locations are to be found, in particular, on west to north to east facing steep slopes above approximately 2000 m. Older snow drift accumulations are still prone to triggering in some places, in particular at transitions from a shallow to a deep snowpack.

In central Valais and the G  n  pi and Saas Fee regions, in the relevant regions both on the southern flank of the Alps and in Grisons, and in Lower Engadine, the avalanche prone locations are to be found on steep slopes of all aspects above approximately 2000 m. Snow drift accumulations are still prone to triggering in some places. In addition, on north facing slopes in particular, isolated avalanches can be released in the old snowpack. Caution is to be exercised in particular in areas where the snow cover is rather shallow. Careful route selection is important.

Sotto Ceneri:

Low avalanche danger (level 1)

All regions: in particular on the northern flank of the Alps and in Valais and northern Grisons, full-depth avalanches are to be expected below approximately 2400 m. These can release on steep south facing grassy slopes and road embankments in particular.

Trend for Thursday and Friday

On Thursday a little snow will fall. The snowfall level will drop to low altitudes. On Friday, the northwesterly wind will bring snow to the north in particular, even at low altitudes. The south will be largely dry on both days. The avalanche danger will change only a little on Thursday, and increase in the north on Friday.

National avalanche bulletin as an MMS (Fr. 0.50/MMS)

Send an SMS with the corresponding key word to the speed dial number 162.

LAWINE overview of the keywords
LAWCHD national avalanche bulletin (german)

Weather Information in collaboration with **MeteoSwiss**

0900 162 138 / 338 Alpine Weather Report MeteoSwiss phone/fax
(phone: CHF 1.20/min) (fax: CHF 2.--/min)

Regional avalanche bulletins (Fr. 0.50/MMS)

LAWZCH Central Switzerland
LAWBVS Lower Valais / VD
LAWOVS Upper Valais
LAWNGR North and Central Grisons
LAWSGR South Grisons
LAWBEO Bernese Oberland
LAWEAN Eastern Part of the Northern Slope of the Alps

Internet: <http://www.slf.ch>

WAP: wap.slf.ch

Teletext: Page 782 (SF DRS)

Phone: 187 (Fr. 0.90/call and min)

Feedback information:

Email: lw@slf.ch

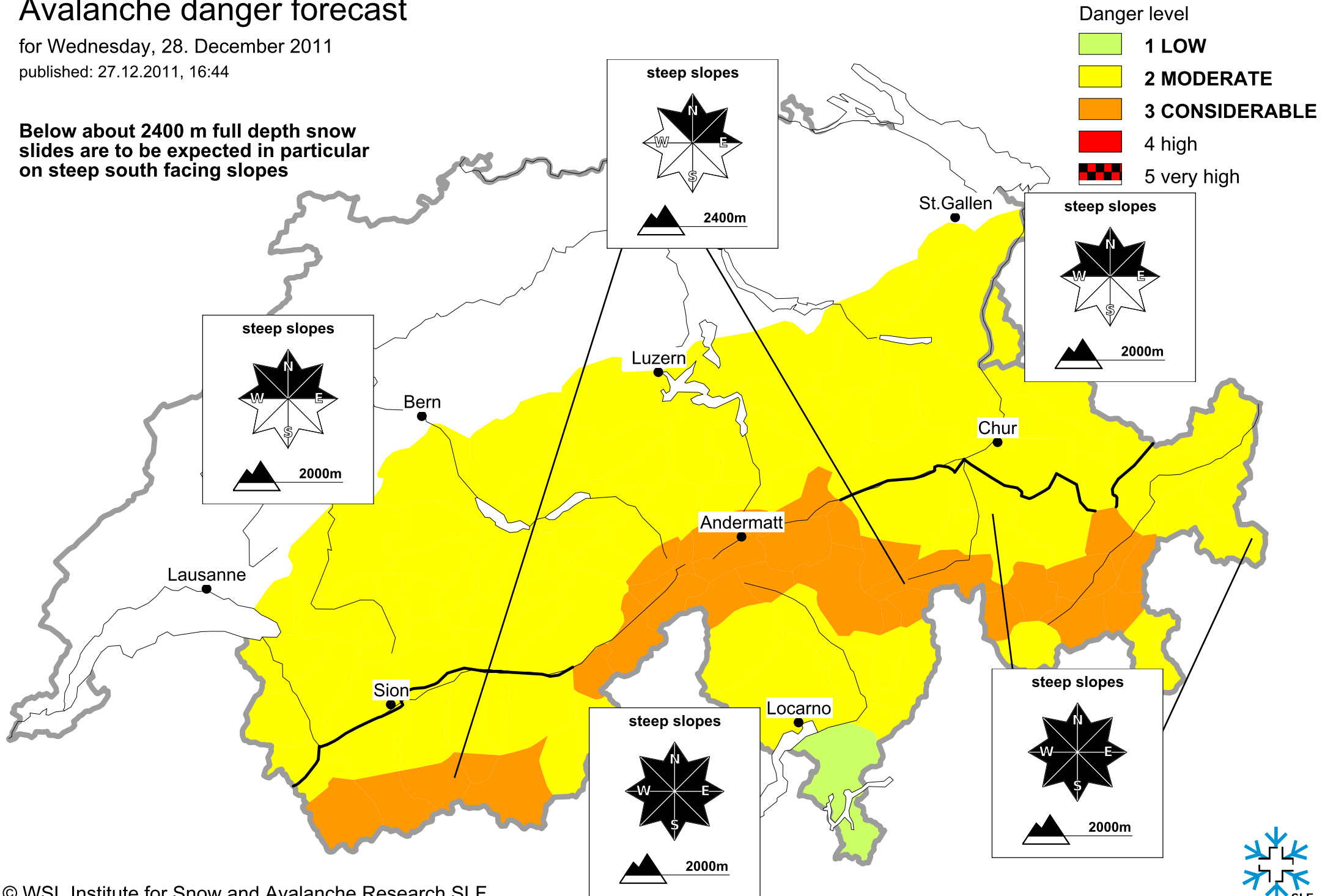
Free phone/fax: 0800 800 187 / 88

Avalanche danger forecast

for Wednesday, 28. December 2011

published: 27.12.2011, 16:44

Below about 2400 m full depth snow slides are to be expected in particular on steep south facing slopes



Avalanche danger forecast

for Wednesday, 28. December 2011

published: 28.12.2011, 07:37

Below about 2400 m full depth snow slides are to be expected in particular on steep south facing slopes

Danger level

- 1 LOW
- 2 MODERATE
- 3 CONSIDERABLE
- 4 high
- 5 very high

