

National avalanche bulletin no. 45

for Monday, 9 January 2012

issue date 8.1.2012, 18:30 hours

Considerable avalanche danger

Current conditions

On Sunday, skies were overcast except in Sotto Ceneri, and there was snowfall. Since Saturday midday from the eastern Bernese Oberland over the Gotthard region, the Urner Alps, the Glarner Alps and northern Grisons into the Lower Engadine, there has been 30 to 60 cm of snowfall; in central Grisons and in the Upper Engadine, 20 to 30 cm; elsewhere, 10 to 20 cm of new fallen snow. In the furthestmost southern regions, conditions remained dry. The wind was blowing at strong velocity from the northwest. The midday temperature at 2000 m was minus 5 degrees.

Additional, wide ranging snowdrift accumulations have formed. They are trigger sensitive in places. More than anywhere else on the Main Alpine Ridge and in the Engadine on shady slopes above 2500 m, faceted and weak layers are evident inside the snowpack near the ground. Particularly in those regions, avalanches can fracture down to the ground.

Short-term development

On Sunday night, the snowfall will gradually slacken off. During the day on Monday in western and southern regions, it will be predominantly sunny. In eastern regions it will remain generally overcast. By Monday evening in the Gotthard region, in the central and eastern parts of the northern flank of the Alps as well as in Grisons, 10 to 20 cm of snowfall is anticipated. The midday temperature in western and southern regions will be minus 4 degrees and in eastern regions minus 8 degrees. The northerly wind will be blowing at moderate strength in western regions, at strong velocity in eastern regions, continuing to bring about snowdrift accumulations.

Avalanche danger forecast for Monday

Northern flank of the Alps; Valais; northern and central Ticino; Grisons:

Considerable avalanche danger (Level 3)

In the Hasli valleys, in the central and eastern parts of the northern flank of the Alps, in the Gotthard region, in northern and central Grisons and in the Engadine, the avalanche prone locations are to be found on steep slopes in all aspects. In the indicated regions of the northern flank of the Alps, in northern Grisons and in the Lower Engadine, the danger zones are above approximately 1600 m; in the remaining regions they are above approximately 1800 m. Freshly formed snowdrift accumulations can easily be triggered even by one single backcountry skier or freerider. Naturally triggered avalanches are possible. These can attain medium, in isolated cases even large size and endanger exposed sectors of transportation routes. For backcountry tours in outlying terrain away from secured ski runs, both extensive experience in evaluating avalanche dangers and restraint are imperative.

In the western part of the northern flank of the Alps not including the Hasli valleys, in the Valais not including Obergoms, in northern Ticino not including the Gotthard region, in central Ticino as well as in the southern valleys of Grisons, the avalanche prone locations are to be found primarily on wind loaded slopes in all aspects above approximately 1800 m.

Avalanches can be triggered even by a single person. These can reach medium size. For backcountry skiing and freeriding tours in outlying terrain away from secured ski runs, experience in assessing avalanche hazards is essential. On this first sunny day following a prolonged period of turbulent weather, restraint is called for.

In all regions of the Swiss Alps below about 2200 m, full depth snowslides are possible.

Trend for Tuesday and Wednesday

On Tuesday, the precipitation will come to an end, including in eastern regions. In western and southern regions it will be sunny. The northerly wind will remain strong. On Wednesday, it will be sunny and warmer throughout the Swiss Alps. The wind will slacken off. The danger of dry avalanches will gradually subside. The danger of full depth snowslides will remain unchanged.

National avalanche bulletin as an MMS (Fr. 0.50/MMS)

Send an SMS with the corresponding key word to the speed dial number 162.

LAWINE overview of the keywords
LAWCHD national avalanche bulletin (german)

Weather Information in collaboration with **MeteoSwiss**

0900 162 138 / 338 Alpine Weather Report MeteoSwiss phone/fax
(phone: CHF 1.20/min) (fax: CHF 2.--/min)

Regional avalanche bulletins (Fr. 0.50/MMS)

LAWZCH Central Switzerland
LAWBVS Lower Valais / VD
LAWOVS Upper Valais
LAWNGR North and Central Grisons
LAWSGR South Grisons
LAWBEO Bernese Oberland
LAWEAN Eastern Part of the Northern Slope of the Alps

Internet: <http://www.slf.ch>

WAP: wap.slf.ch

Teletext: Page 782 (SF DRS)

Phone: 187 (Fr. 0.90/call and min)

Feedback information:

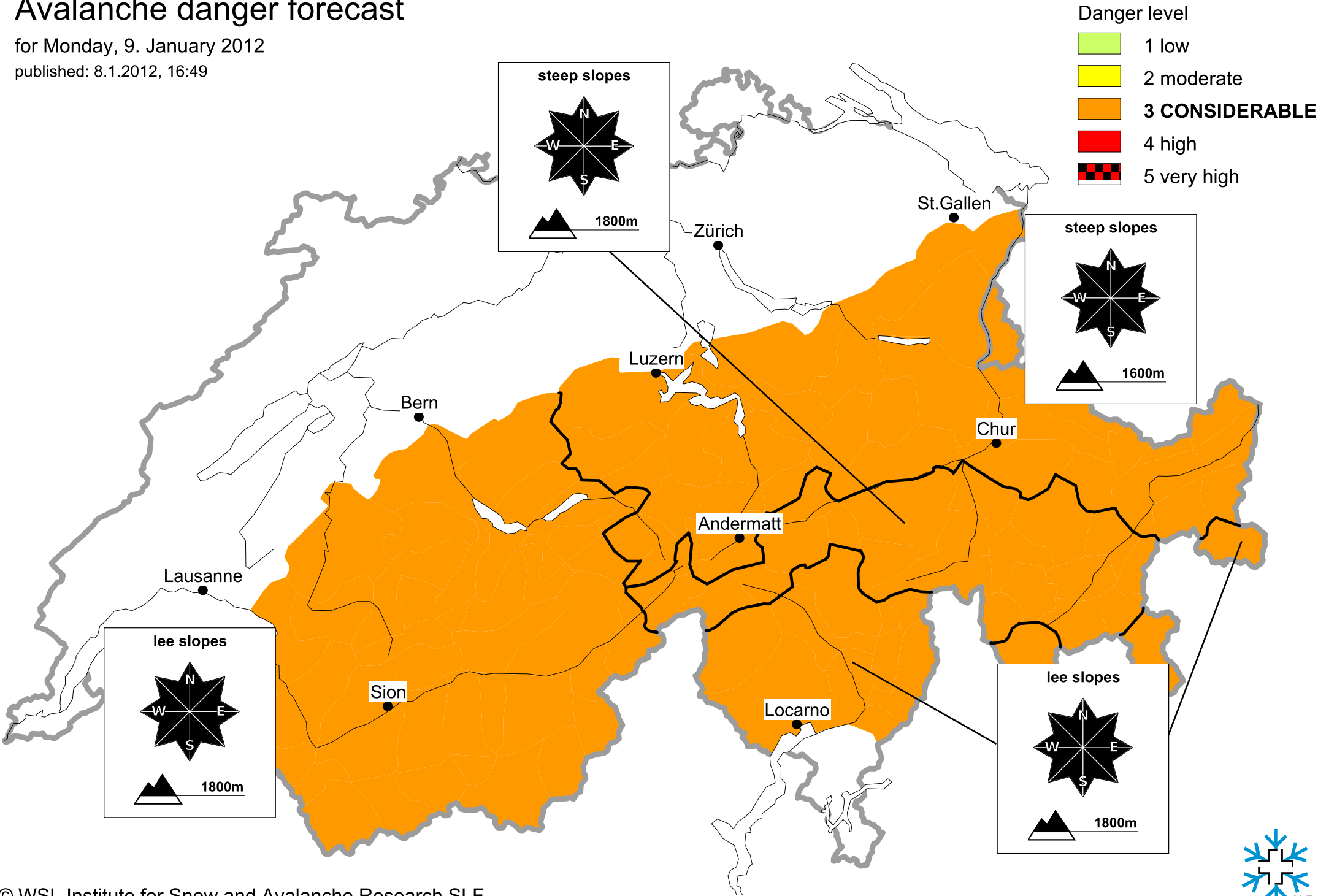
Email: lw@slf.ch

Free phone/fax: 0800 800 187 / 88

Avalanche danger forecast

for Monday, 9. January 2012

published: 8.1.2012, 16:49



Avalanche danger forecast

for Monday, 9. January 2012

published: 9.1.2012, 07:41

