

National avalanche bulletin no. 62

for Thursday, 26 January 2012

issue date 25.1.2012, 18:30 hours

Snowdrift accumulations should be evaluated with care

Current conditions

On Wednesday on the southern flank of the Alps and in the Upper Engadine, it was predominantly sunny, elsewhere heavily overcast. In northern regions there was a bit of additional snowfall during the course of the day. The midday temperatures at 2000 m were minus 2 degrees in western regions and minus 8 degrees in eastern regions. The northwesterly to northerly wind was blowing at moderate velocity at high altitude, in isolated cases at strong velocity.

Since Monday on the northern flank of the Alps and in northern Grisons, there has been 20 to 40 cm of snowfall widespread; in the Urner and Glarner Alps, as much as 60 cm of new fallen snow. From the Lower Valais over northern Valais, northern Ticino, central Grisons into the Lower Engadine, there has been 10 to 20 cm of fresh fallen snow; further to the south, less. The layers of snowdrift which lie nearest to the upper surface are prone to triggering in places. Beneath them, the snowpack is generally well consolidated. Particularly on the Main Alpine Ridge on north facing slopes above approximately 2500 m, the snowpack layers which are near the ground are weakly bonded.

Short-term development

On Thursday it will be predominantly sunny. The midday temperatures at 2000 m will be minus 1 degree in western regions and minus 4 degrees in eastern regions. The northwesterly wind will be blowing at light to moderate velocity.

Avalanche danger forecast for Thursday

Vaud and Fribourg Alps; Bernese Oberland; central and eastern parts of the northern flank of the Alps; Valais north of the Rhone; Goms; northern and central Grisons; Engadine:

Considerable avalanche danger (Level 3)

In the Vaud and Fribourg Alps, in the Bernese Oberland as well as in the central and eastern parts of the northern flank of the Alps, the avalanche prone locations are to be found on steep slopes in all aspects above approximately 1800 m. In the Valais north of the Rhone, in Goms, in northern and central Grisons as well as in the Engadine, the avalanche prone locations are to be found primarily on wind loaded slopes in all aspects above approximately 2200 m. Avalanches can be triggered even by a single backcountry skier or freerider, particularly in the newly amassed snowdrift. In isolated cases avalanches can attain medium size on the northern flank of the Alps in particular. Experience in the evaluation of avalanche danger and a prudent route selection are important.

Chablais; Emosson; southern Valais from Great St. Bernard into the Simplon region; northern and central Ticino; southern valleys of Grisons:

Moderate avalanche danger (Level 2)

In the indicated regions of the Valais, the avalanche prone locations are to be found on steep slopes in all aspects above approximately 2000 m. In northern and central Ticino and in the southern valleys of Grisons, the avalanche prone locations are to be found primarily on wind loaded slopes in all aspects above approximately 2000 m. Snowdrift accumulations can be triggered even by a single backcountry skier or freerider, although they generally remain small sized. A cautious route selection is recommended.

In all regions of the Swiss Alps, full depth snowslides which attain medium size are possible below about 2400 m at any and all times. This is particularly the case on steep, grassy slopes in eastern, southern and western aspects. Exposed sections of transportation routes can be endangered in isolated cases. Caution is urged below glide cracks.

Trend for Friday and Saturday

It will be generally overcast and a bit of snowfall is anticipated. The avalanche danger will subside incrementally. Full depth snowslides continue to be possible.

National avalanche bulletin as an MMS (Fr. 0.50/MMS)

Send an SMS with the corresponding key word to the speed dial number 162.

LAWINE overview of the keywords
LAWCHD national avalanche bulletin (german)

Weather Information in collaboration with **MeteoSwiss**

0900 162 138 / 338 Alpine Weather Report MeteoSwiss phone/fax
(phone: CHF 1.20/min) (fax: CHF 2.--/min)

Regional avalanche bulletins (Fr. 0.50/MMS)

LAWZCH Central Switzerland
LAWBVS Lower Valais / VD
LAWOVS Upper Valais
LAWNGR North and Central Grisons
LAWSGR South Grisons
LAWBEO Bernese Oberland
LAWEAN Eastern Part of the Northern Slope of the Alps

Internet: <http://www.slf.ch>

WAP: wap.slf.ch

Teletext: Page 782 (SF DRS)

Phone: 187 (Fr. 0.90/call and min)

Feedback information:

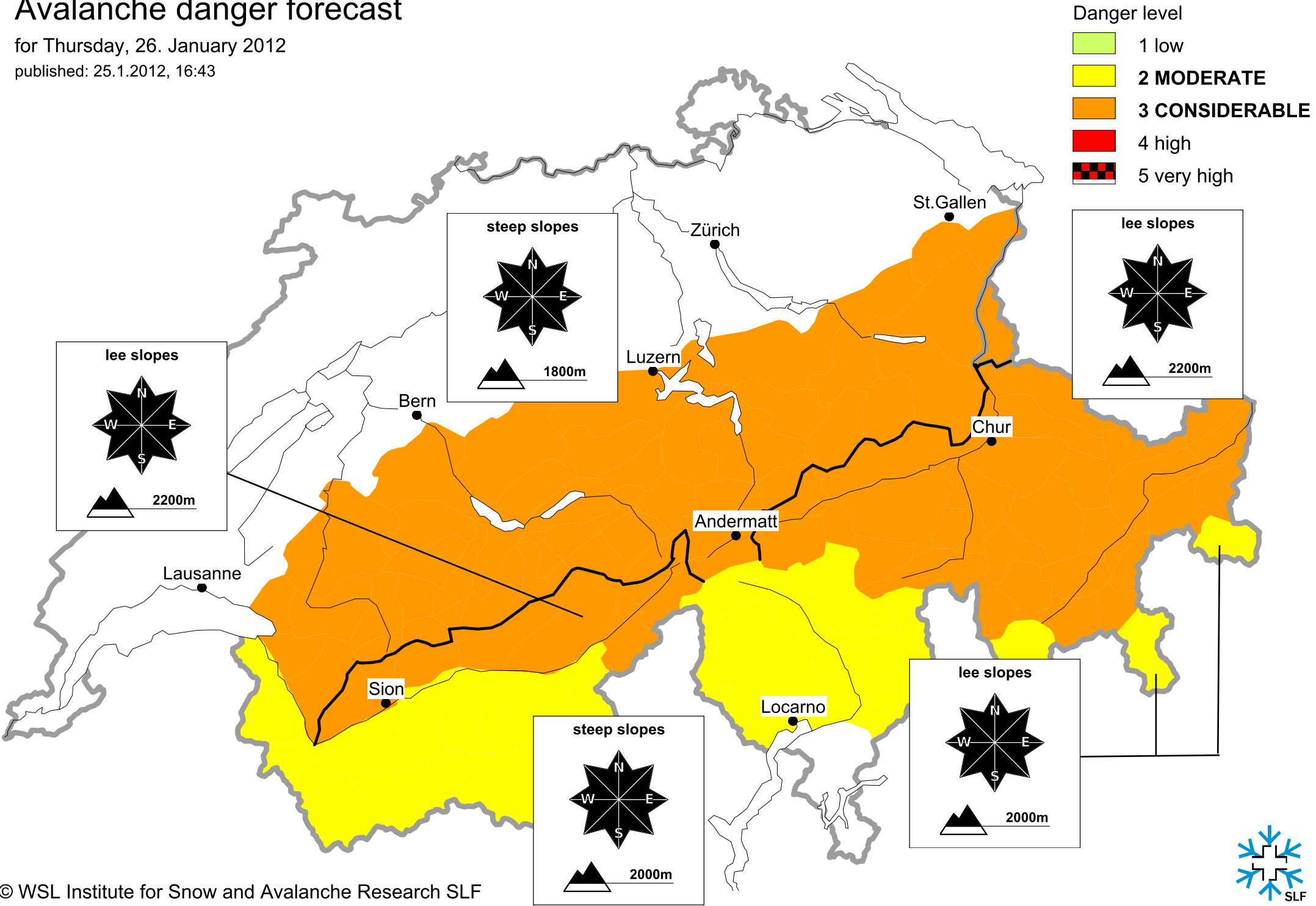
Email: lwp@slf.ch

Free phone/fax: 0800 800 187 / 88

Avalanche danger forecast

for Thursday, 26. January 2012

published: 25.1.2012, 16:43



Avalanche danger forecast

for Thursday, 26. January 2012

published: 26.1.2012, 07:37

