

National avalanche bulletin no. 65

for Sunday, 29 January 2012

issue date 28.1.2012, 18:30 hours

Caution urged towards full depth snowslides and fresh snowdrift

Current conditions

On Saturday it was heavily overcast. On the northern flank of the Alps there was 10 to 20 cm of snowfall; in western and northern Valais, in northern Ticino and in western Grisons 5 to 10 cm; elsewhere less. The wind was generally blowing at light velocity from southerly directions. Along the Prealps, the bise wind set in. The midday temperatures at 2000 m ranged between minus 7 degrees in western and minus 4 degrees in eastern regions.

On shady slopes more than anywhere else, the surface hoar has in some places been blanketed by snowfall. The fresh fallen snow is loosely packed. Beneath it, the snowpack is favourably structured in general, manifesting next to no trigger sensitive layers. Particularly on the Main Alpine Ridge on north facing slopes above approximately 2500 m, the layers of the snowpack nearest the ground are weakly bonded. The deep snowpack tends to insulate the ground, prompting the activity of full depth snowslides below about 2400 m to continue.

Short-term development

By Sunday evening on the Main Alpine Ridge from the Matterhorn into Goms and in the Maggia valleys, 20 to 30 cm of snowfall is anticipated. Towards the north, the amounts of snowfall are expected to be far less and bright intervals will increase over the course of the day. In eastern regions it will remain dry. The midday temperature at 2000 m will be minus 6 degrees. The southeasterly wind will be blowing intermittently at moderate velocity, particularly in the areas with precipitation, elsewhere winds will be light. The bise wind will be blowing along the Prealps and in the Jura at moderate to strong velocity for a time. The loosely packed new fallen snow will be transported.

Avalanche danger forecast for Sunday

Western Prealps; Main Alpine Ridge from the Matterhorn into Simplon region; southern Goms; Bedretto; upper Maggia valleys:

Considerable danger of dry avalanches (Level 3)

The avalanche prone locations are to be found primarily on wind loaded slopes. In the western Prealps, the danger zones are located particularly in southern to western to northern aspects above approximately 1600 m; in the remaining regions of this danger level, they are located particularly in southern to northern to eastern aspects above approximately 2000 m. The freshly formed snowdrift accumulations can be easily triggered in some places and should be avoided.

Remaining regions of the Swiss Alps excluding Sotto Ceneri:

Moderate danger of dry avalanches (Level 2)

The avalanche prone locations are to be found on steep slopes in all aspects. On the northern flank of the Alps not including the western Prealps, the danger zones are found above approximately 1800 m; in the remaining parts of the Valais and Ticino, as well as in Grisons, they are found above approximately 2000 m. Avalanches can be triggered in older layers of snowdrift primarily through large additional loading. Freshly formed snowdrift accumulations can be easily triggered in some places, although the snow masses which are released generally remain small sized.

On the northern flank of the Alps, in the Valais, in northern Ticino, in northern and central Grisons, in the Engadine and in the Münstertal, there is "moderate" danger of full depth snowslides. Below about 2400 m, full depth snowslides on steep, grassy slopes in eastern, southern and western aspects in particular are currently the main hazard. Released snowslides of medium size can be expected at any and all times. Exposed sections of transportation routes are endangered in isolated cases. Caution is urged below glide cracks.

In central Ticino, in Val Calanca, in Val Moesa, in Bergell and in Puschlav, the danger of full depth snowslides is "low".

Trend for Monday and Tuesday

On Monday it will be dry; it is expected to be partly sunny, accompanied by light winds. On Tuesday there will be some intermittent snowfall. The danger of full depth snowslides will remain unchanged. The danger of dry avalanches will subside.

National avalanche bulletin as an MMS (Fr. 0.50/MMS)

Send an SMS with the corresponding key word to the speed dial number 162.

LAWINE overview of the keywords
LAWCHD national avalanche bulletin (german)

Weather Information in collaboration with **MeteoSwiss**

0900 162 138 / 338 Alpine Weather Report MeteoSwiss phone/fax
(phone: CHF 1.20/min) (fax: CHF 2.--/min)

Regional avalanche bulletins (Fr. 0.50/MMS)

LAWZCH Central Switzerland
LAWBVS Lower Valais / VD
LAWOVS Upper Valais
LAWNGR North and Central Grisons
LAWSGR South Grisons
LAWBEO Bernese Oberland
LAWEAN Eastern Part of the Northern Slope of the Alps

Internet: <http://www.slf.ch>

WAP: <wap.slf.ch>

Teletext: Page 782 (SF DRS)

Phone: 187 (Fr. 0.90/call and min)

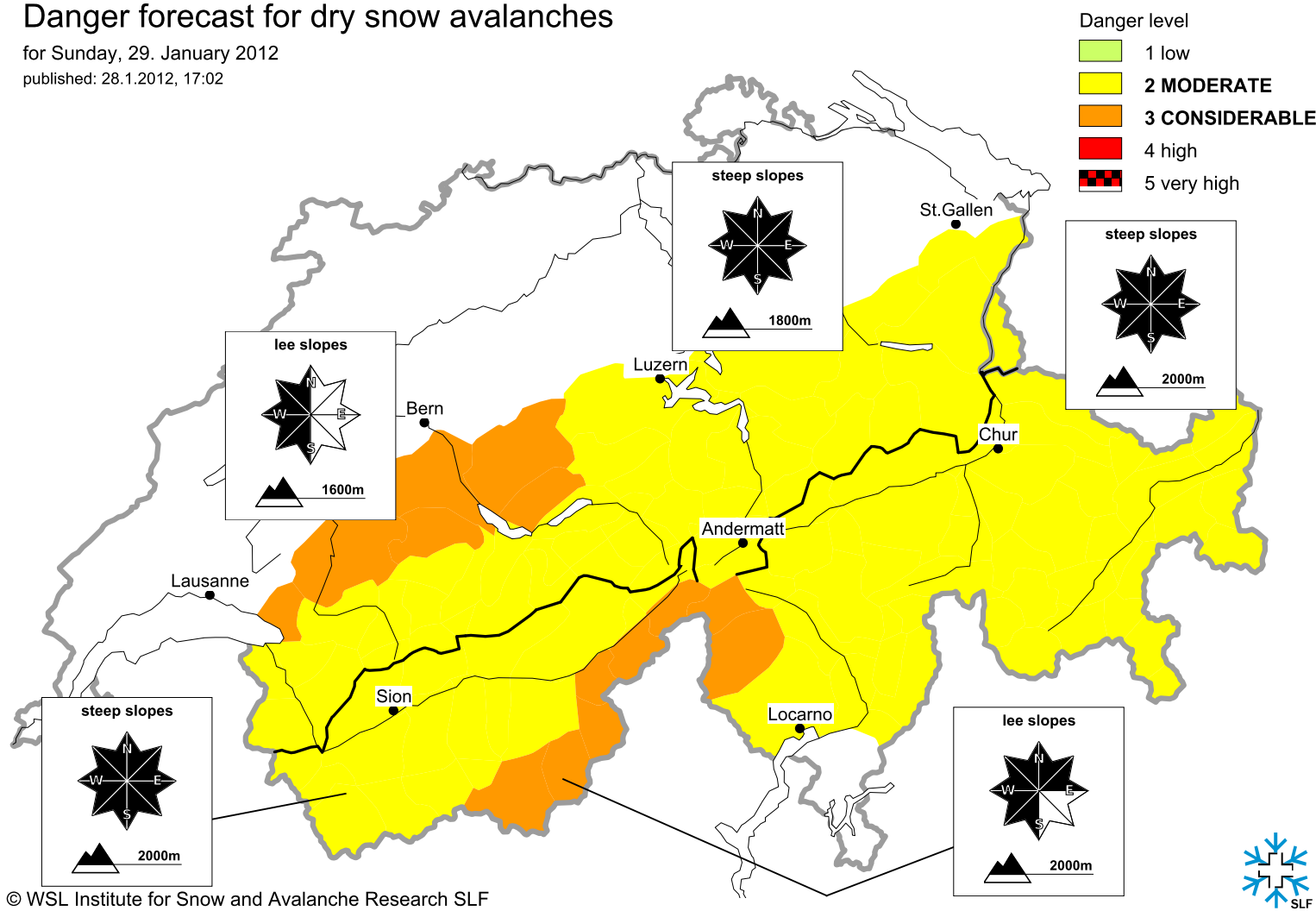
Feedback information:

Email: lwp@slf.ch

Free phone/fax: 0800 800 187 / 88

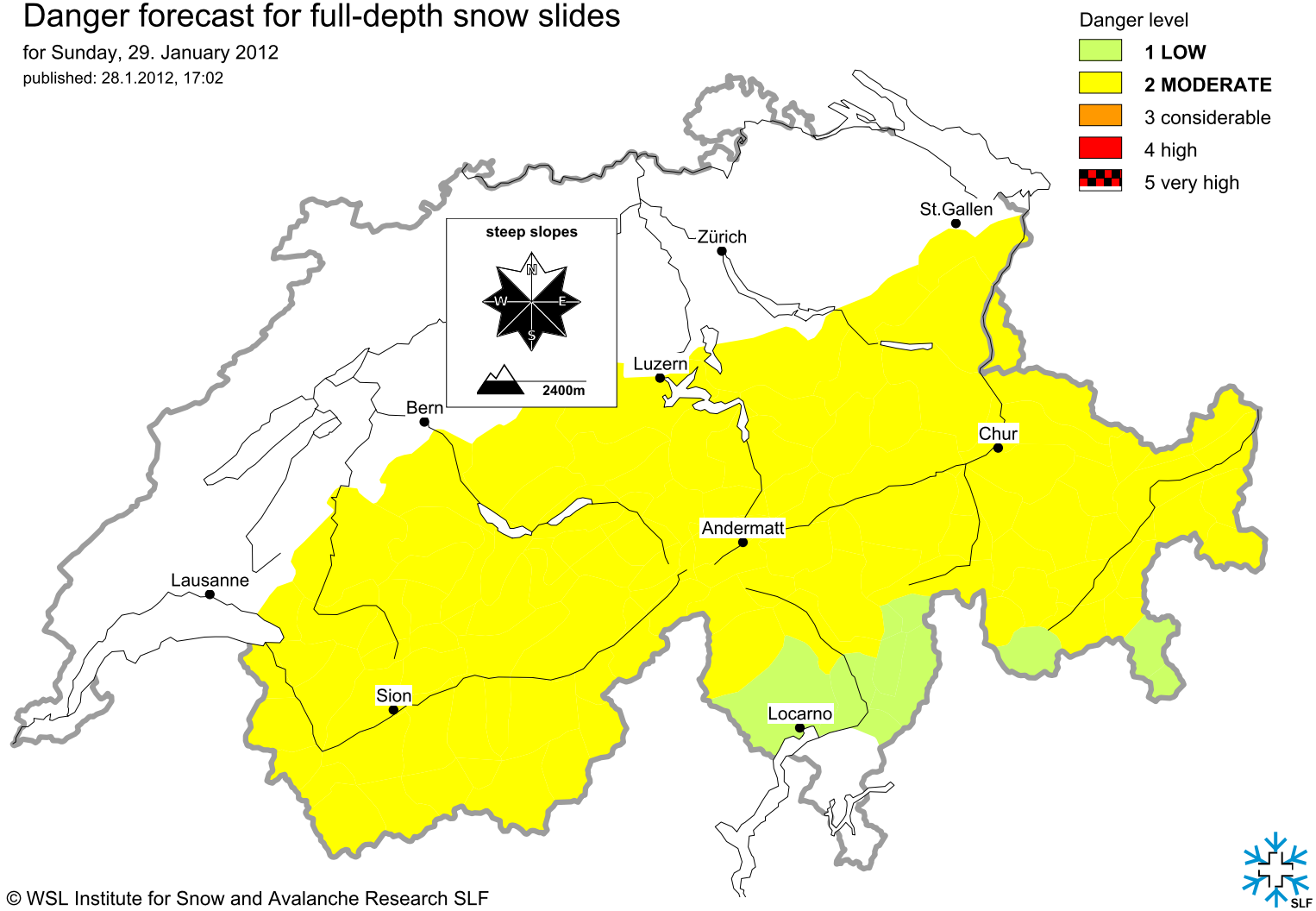
Danger forecast for dry snow avalanches

for Sunday, 29. January 2012
published: 28.1.2012, 17:02



Danger forecast for full-depth snow slides

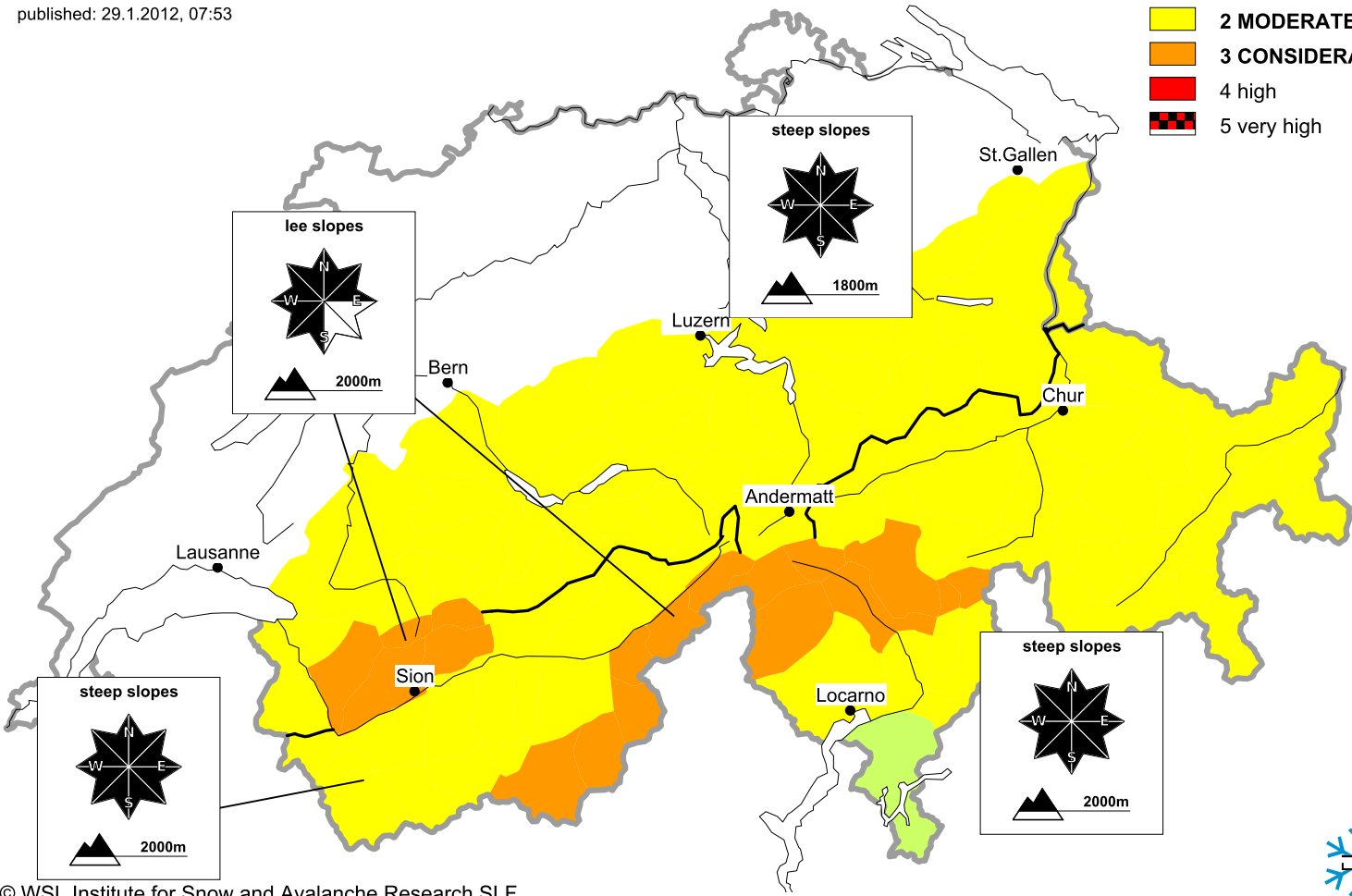
for Sunday, 29. January 2012
published: 28.1.2012, 17:02



Danger forecast for dry snow avalanches

for Sunday, 29. January 2012
published: 29.1.2012, 07:53

- Danger level
- 1 LOW
 - 2 MODERATE
 - 3 CONSIDERABLE
 - 4 high
 - 5 very high



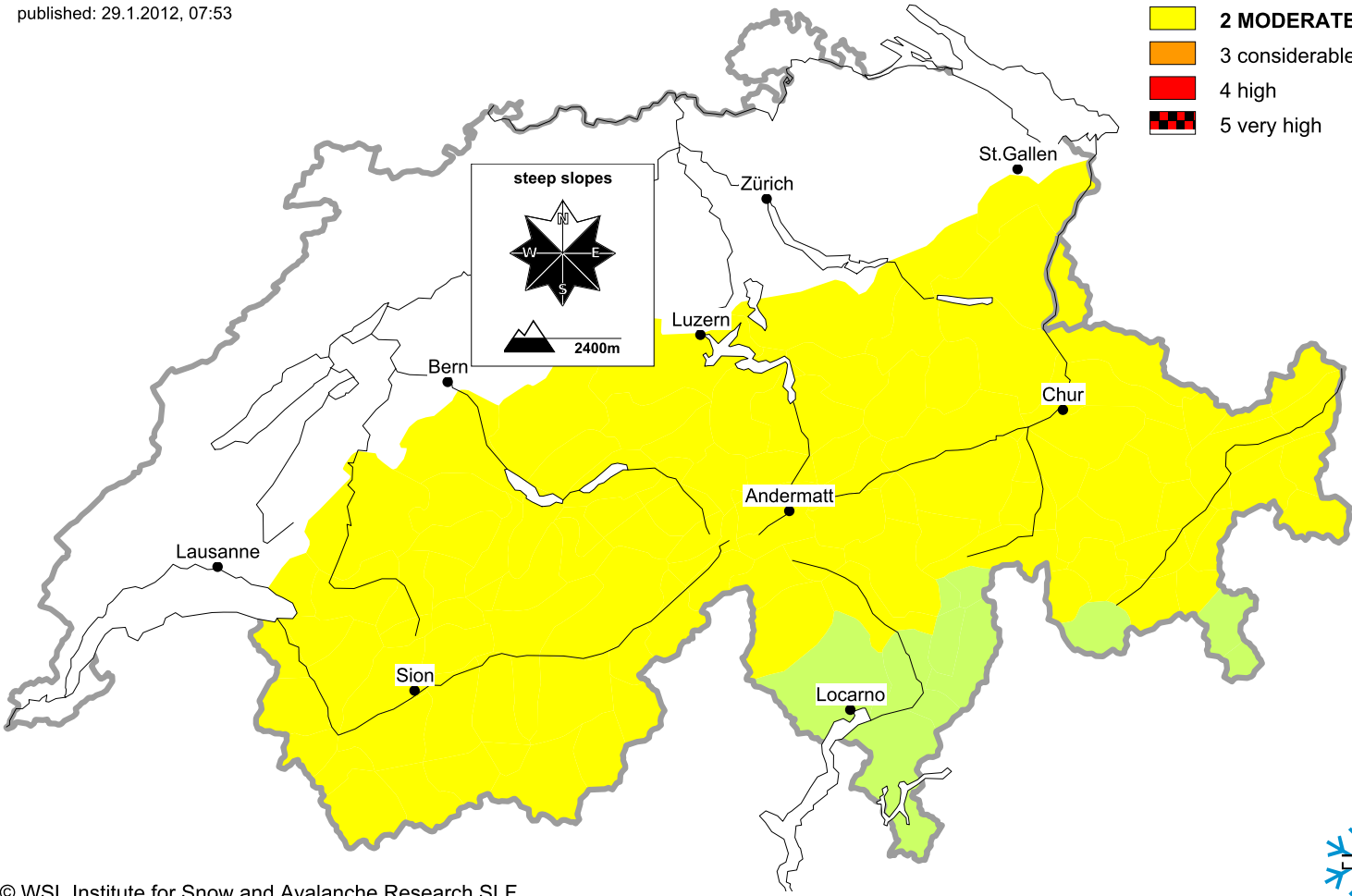
© WSL Institute for Snow and Avalanche Research SLF



Danger forecast for full-depth snow slides

for Sunday, 29. January 2012
published: 29.1.2012, 07:53

- Danger level
- 1 LOW
 - 2 MODERATE
 - 3 considerable
 - 4 high
 - 5 very high



© WSL Institute for Snow and Avalanche Research SLF

