

National avalanche bulletin no. 78

for Saturday, 11 February 2012

issue date 10.2.2012, 18:30 hours

Caution urged towards fresh snowdrift - considerable avalanche danger widespread

Current conditions

On Thursday night there was a small amount of snowfall in northeastern regions. During the day on Friday it was quite sunny above 2000 m. The midday temperature at 2000 m was minus 18 degrees. The wind shifted from northerly to northeasterly. During the night the wind was blowing at strong velocity widespread and transported both fresh fallen and old, deposited snow. During the day on Friday, the wind slackened off somewhat.

Freshly formed and, in some places, even older snowdrift accumulations are prone to triggering. In its more deeply embedded layers, the snowpack is favourably structured by and large. The deep snowpack tends to insulate the ground. Full depth avalanches continue to be possible in isolated cases.

Short-term development

On Saturday it will be predominantly sunny above approximately 1800 m. In eastern regions, clouds will move in during the afternoon. In southern regions the skies will remain variably cloudy. The midday temperature at 2000 m will be minus 14 degrees. The northeasterly wind will be blowing at moderate velocity, on the northern flank of the Alps winds will blow intermittently at strong velocity, but will transport only small amounts of old snow.

Avalanche danger forecast for Saturday

Northern Alpine Ridge; Trient; Great St. Bernard; Main Alpine Ridge from the Matterhorn into Bergell; northern and central Grisons; Engadine; Münstertal:

Considerable avalanche danger (Level 3)

The avalanche prone locations are to be found primarily on wind loaded slopes in all aspects. On the Main Alpine Ridge from the Matterhorn into Bergell, in the Engadine and in the Münstertal, the danger zones are above approximately 2200 m; in the remaining regions of this danger level, they are above approximately 2400 m. Snowdrift accumulations have often been deposited in spots where the slope gradient changes abruptly, or in gullies and bowls. They can be easily triggered in some places and should be circumvented whenever possible. Whumpfung sounds and shooting cracks can be indicators of imminent avalanche danger. Wherever the wind has exercised no influence recently, the situation is significantly more favourable. In outlying terrain away from secured ski runs, experience in assessing the avalanche hazards and a cautious route selection are imperative.

Regions north of the northern Alpine Ridge; inneralpine regions of Valais; regions of Mauvoisin, Arolla and Mountet; regions south of the central part of Main Alpine Ridge; Puschlav:

Moderate avalanche danger (Level 2)

The avalanche prone locations are to be found primarily on wind loaded slopes in all aspects. In the regions north of the northern Alpine Ridge, the danger zones are above approximately 1800 m; in the remaining regions of this danger level, they are above approximately 2000 m. Freshly formed and older snowdrift accumulations can be easily triggered in some places. They have often been deposited in places where the slope gradient changes abruptly, or in gullies and bowls. The snowdrift accumulations should be circumvented whenever possible in very steep terrain in particular, primarily through thoughtful route planning. Whumpfung sounds and shooting cracks when stepping onto the snowpack can be indicators of imminent avalanche danger. The avalanche prone locations tend to become increasingly frequent with ascending altitude.

On the Main Alpine Ridge and northwards thereof, more than anywhere else, below about 2400 m on west to south to east facing slopes, full depth snowslides are possible in isolated cases. These slides can reach medium size. In isolated cases, exposed sections of transportation routes can be placed at risk. Caution is urged below glide cracks in the snowpack.

Trend for Sunday and Monday

On Sunday it will be predominantly sunny in the Swiss Alps. During the course of the day on Monday, clouds will move in from the north. It will be cold on both days, accompanied by moderate to strong velocity northeasterly winds. The avalanche danger will diminish only incrementally. Snowdrift remains the primary hazard. Full depth snowslides will continue to be possible.

National avalanche bulletin as an MMS (Fr. 0.50/MMS)

Send an SMS with the corresponding key word to the speed dial number 162.

LAWINE overview of the keywords
LAWCHD national avalanche bulletin (german)

Weather Information in collaboration with **MeteoSwiss**

0900 162 138 / 338 Alpine Weather Report MeteoSwiss phone/fax
(phone: CHF 1.20/min) (fax: CHF 2.-/min)

Regional avalanche bulletins (Fr. 0.50/MMS)

LAWZCH Central Switzerland
LAWBVS Lower Valais / VD
LAWOVS Upper Valais
LAWNGR North and Central Grisons
LAWSGR South Grisons
LAWBEO Bernese Oberland
LAWEAN Eastern Part of the Northern Slope of the Alps

Internet: <http://www.slf.ch>

WAP: wap.slf.ch

Teletext: Page 782 (SF DRS)

Phone: 187 (Fr. 0.90/call and min)

Feedback information:

Email: lw@slf.ch

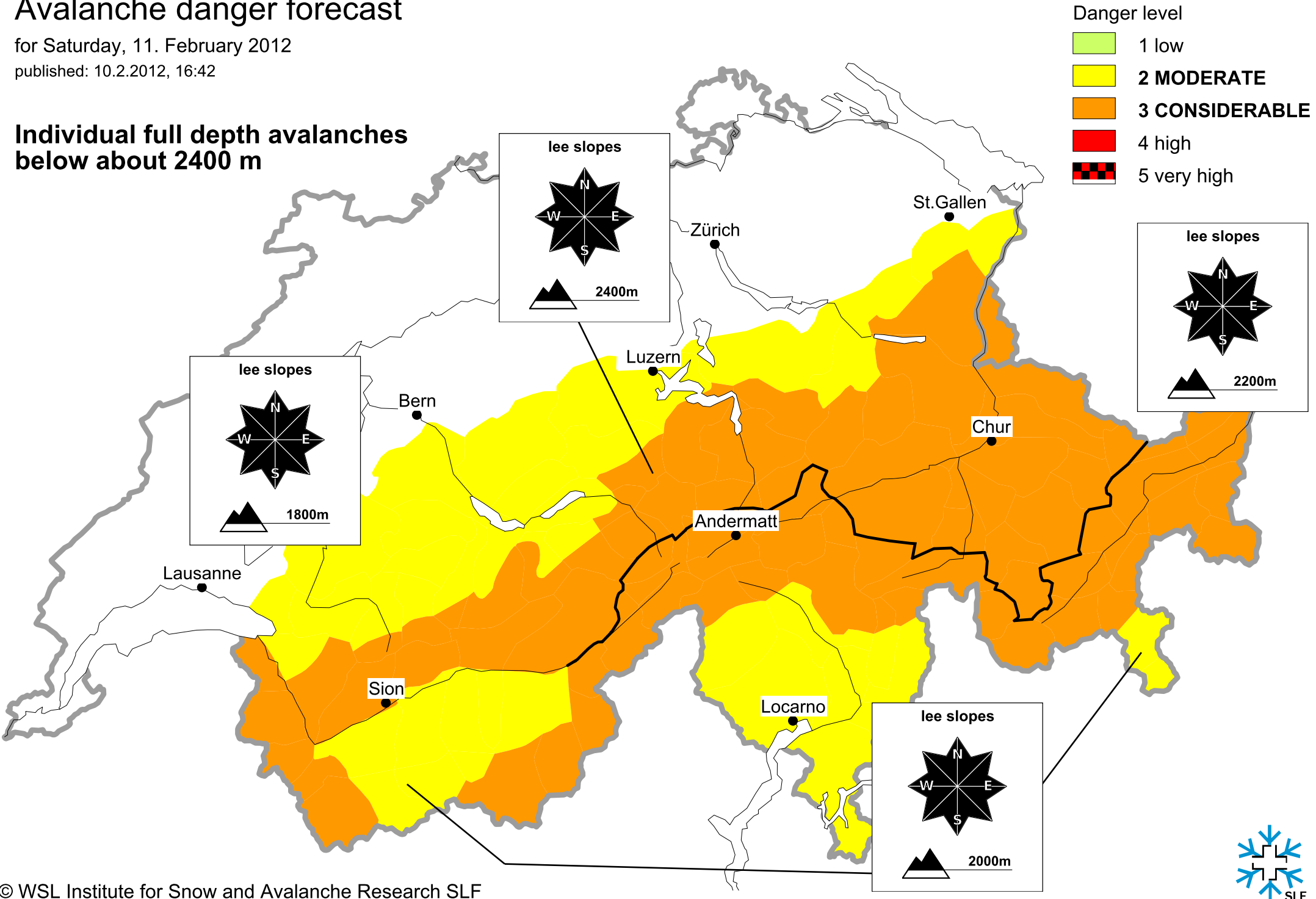
Free phone/fax: 0800 800 187 / 88

Avalanche danger forecast

for Saturday, 11. February 2012

published: 10.2.2012, 16:42

Individual full depth avalanches below about 2400 m



Avalanche danger forecast

for Saturday, 11. February 2012

published: 11.2.2012, 07:42

**Individual full depth avalanches
below about 2400 m**

