

## National avalanche bulletin no. 89

for Wednesday, 22 February 2012

issue date 21.2.2012, 18:30 hours

### *Considerable avalanche danger in the north and east*

#### Current conditions

Tuesday was a cloudless day. The midday temperature at 2000 m was about minus 3 degrees. The wind during the night was light to moderate from the southeast. It eased during the day.

The bonding of the near-surface layers of the snowpack is unfavourable in some places, especially in Lower Valais, on the northern flank of the Alps, and in Grisons. Whumpfung sounds can give an indication of the danger. The avalanche prone locations are lightly covered with snow and mostly difficult to recognise. The avalanche prone locations are more prevalent in little used backcountry terrain than in highly frequented off-piste terrain. In Upper Valais and on the southern flank of the Alps in particular, the snowpack has been substantially influenced by the wind and is mostly hard.

#### Short-term development

Wednesday will be sunny. The midday temperature at 2000 m will climb to plus 1 degree. The wind will be mostly light from the northeast.

#### Avalanche danger forecast for Wednesday

Prealps; central and eastern parts of the northern flank of the Alps excluding Urseren; also northern and central Grisons; Engadine; Münstertal:

##### *Considerable avalanche danger (level 3)*

In the Prealps and the relevant regions in the central and eastern parts of the northern flank of the Alps, the avalanche prone locations are to be found, in particular, on west to north to southeast facing steep slopes above approximately 1800 m. In the other regions subject to this danger level, the avalanche prone locations are to be found, in particular, on west to north to southeast facing steep slopes above approximately 2000 m. Avalanches can be released by a single person. The prevalence of avalanche prone locations has decreased, however, in the last few days. The relatively old snow drift accumulations, which are mostly covered by fresh snow, represent the main danger. These avalanche prone locations are difficult to recognise. Experience in the assessment of the avalanche danger is required.

Western part of the northern flank of the Alps excluding the Prealps; also Urseren; Valais; northern Ticino; Val Calanca; Val Moesa; Bergell; Puschlav:

##### *Moderate avalanche danger (level 2)*

In the relevant regions in the western part of the northern flank of the Alps and in Urseren and Valais excluding the Zermatt, Saas Fee and Simplon regions, the avalanche prone locations are to be found, in particular, on southwest to north to southeast facing steep slopes above approximately 1800 m. In isolated cases, avalanches can be triggered by a single person. The relatively old snow drift accumulations, which are mostly covered by fresh snow and barely recognisable, represent the main danger.

In the Zermatt, Saas Fee, Simplon, northern Ticino, Val Calanca, Val Moesa, Bergell and Puschlav regions, the avalanche prone locations are to be found, in particular, in southwest to north to southeast facing gullies and bowls above approximately 2000 m. In particular, transitions from a shallow snowpack into gullies and bowls are to be evaluated with care and prudence.

Central Ticino; Sotto Ceneri:

##### *Low avalanche danger (level 1)*

In view of the warming and solar radiation, the danger of small wet snow slides will increase during the day in all regions. In addition, in the north and in Valais in particular, isolated full-depth avalanches can occur below approximately 2400 m on west, south and east facing slopes.

#### Trend for Thursday and Friday

Thursday will be very cloudy in the north and sunny at times in the south. On Thursday night a little snow will fall above approximately 2000 m in the north. Friday will be sunny at times and very mild. The danger of dry avalanches will decrease. On Friday, the danger of wet avalanches will increase during the day.

##### National avalanche bulletin as an MMS (Fr. 0.50/MMS)

Send an SMS with the corresponding key word to the speed dial number 162.

LAWINE overview of the keywords  
LAWCHD national avalanche bulletin (german)

Weather Information in collaboration with **MeteoSwiss**

0900 162 138 / 338 Alpine Weather Report MeteoSwiss phone/fax  
(phone: CHF 1.20/min) (fax: CHF 2.--/min)

##### Regional avalanche bulletins (Fr. 0.50/MMS)

LAWZCH Central Switzerland  
LAWBVS Lower Valais / VD  
LAWOVS Upper Valais  
LAWNGR North and Central Grisons  
LAWSGR South Grisons  
LAWBEO Bernese Oberland  
LAWEAN Eastern Part of the Northern Slope of the Alps

**Internet:** <http://www.slf.ch>

**WAP:** [wap.slf.ch](http://wap.slf.ch)

**Teletext:** Page 782 (SF DRS)

**Phone:** 187 (Fr. 0.90/call and min)

**Feedback information:**

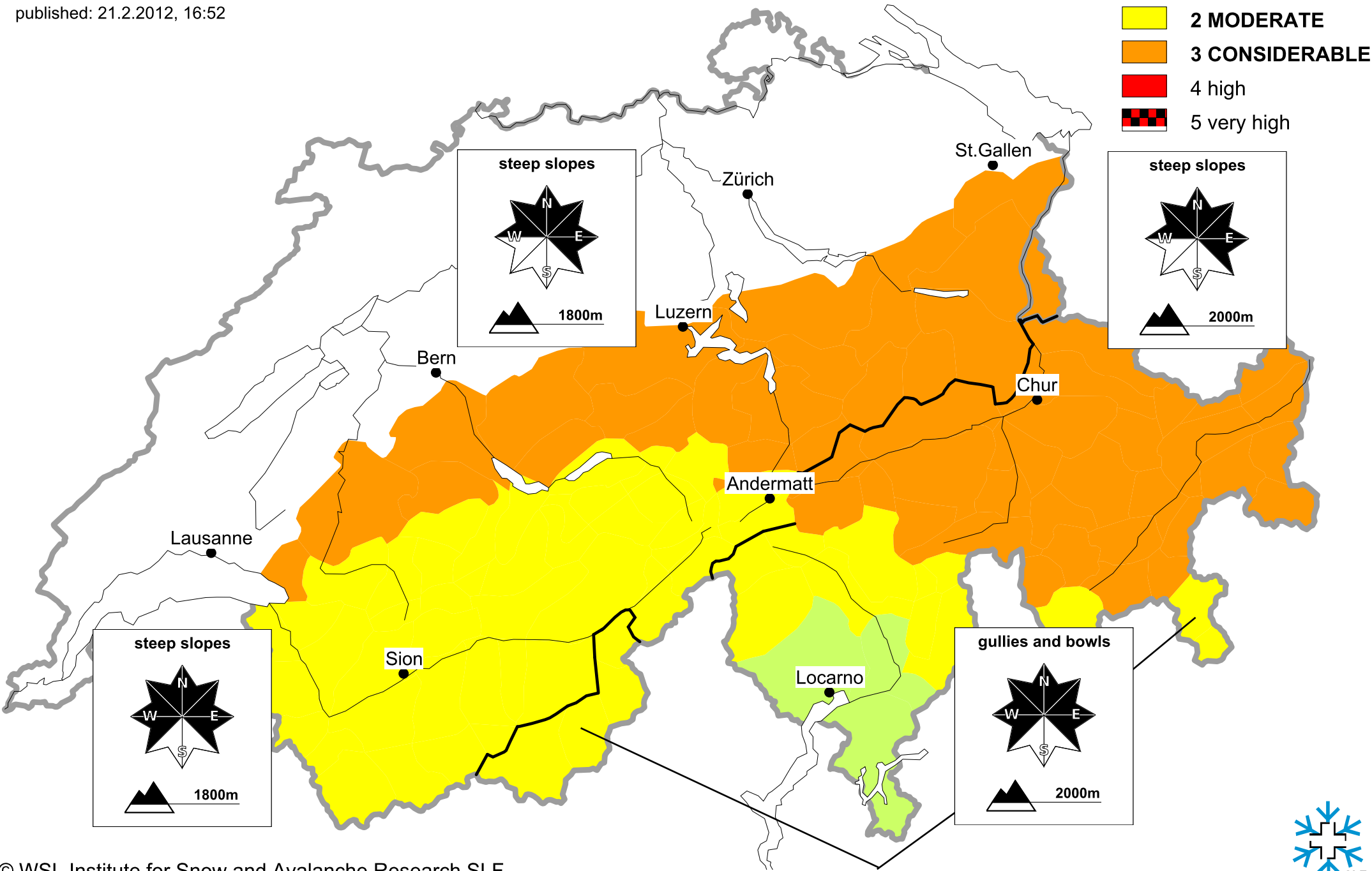
Email: [lwp@slf.ch](mailto:lwp@slf.ch)

Free phone/fax: 0800 800 187 / 88

# Avalanche danger forecast

for Wednesday, 22. February 2012

published: 21.2.2012, 16:52



# Avalanche danger forecast

for Wednesday, 22. February 2012

published: 22.2.2012, 07:49

