

National avalanche bulletin no. 91

for Friday, 24 February 2012

issue date 23.2.2012, 18:30 hours

Escalating avalanche danger during the course of the day

Current conditions

On Thursday, following a night of clear skies, it was heavily overcast in general. Only in the furthest southern regions were there bright intervals. The midday temperatures at 2000 m were plus 1 degree in northern regions and plus 4 degrees in southern regions. The wind was blowing at predominantly light to moderate strength from northerly to northwesterly directions.

In the uppermost layers of the snowpack, the snow layering is unfavourable in some places of Lower Valais, on the northern flank of the Alps and in Grisons more than anywhere else. The likelihood of avalanches triggering has diminished somewhat, but avalanches have still been triggered by backcountry skiers and freeriders in isolated cases. The avalanche prone locations are generally difficult to recognize. They are more prevalent in relatively unfrequented backcountry terrain than in much used off-piste terrain.

Short-term development

On Thursday night the skies are expected to clear up. During the day on Friday it will be predominantly sunny. The freezing level will ascend towards 3200 m. The wind will be blowing at light to moderate strength from northerly directions.

Through solar radiation and the daytime warming cycle, the uppermost layers of the snowpack will become increasingly prone to triggering over the course of the day.

Avalanche danger forecast for Friday

Northern flank of the Alps; Valais; northern Ticino; Grisons:

Moderate danger of dry avalanches (Level 2)

In all regions of this danger level, the avalanche prone locations are to be found primarily in southwestern to northern to southeastern aspects.

In the Prealps, the danger zones are to be found above approximately 1600 m. On the northern flank of the Alps not including the Prealps, in northern and central Grisons, in the Engadine and in the Münstertal, the avalanche prone locations are to be found above approximately 1800 m. The major peril stems from older snowdrift accumulations which have generally been blanketed over by last week's snowfall. These avalanche prone locations are discernible only with difficulty. Avalanches can still be triggered by a single backcountry skier or freerider in isolated cases. A cautious route selection, as well as maintaining distances between persons when ascending the mountainside, and descending singly are important.

In the Valais, in northern Ticino, Val Calanca, Val Moesa, Bergell and Puschlav, the avalanche prone locations are to be found primarily above approximately 2000 m. Particularly in transition areas into gullies and bowls where the snow is relatively shallow, great care should be exercised in assessing the situation.

Central Ticino; Sotto Ceneri:

Low avalanche danger of dry avalanches (Level 1)

Entire region of the Swiss Alps:

Through solar radiation and the daytime warming cycle, the danger of moist and wet avalanches is expected to escalate significantly over the course of the day. On the Main Alpine Ridge and northwards thereof, danger Level 3, "considerable" will be reached; in the remaining regions, Level 2, "moderate" will be reached. On east, south and west facing slopes below about 2400 m in particular, small sized, in isolated cases medium sized naturally triggered avalanches can be expected. Such avalanches can be triggered even by a single backcountry skier or freerider. Tours in outlying terrain should be brought to a close early in the day. In addition, below about 2400 m, full depth snowslides are possible which can, in isolated cases, place exposed sections of transportation routes at risk. Caution is urged below glide cracks.

Trend for Saturday and Sunday

National avalanche bulletin as an MMS (Fr. 0.50/MMS)

Send an SMS with the corresponding key word to the speed dial number 162.

LAWINE overview of the keywords

LAWCHD national avalanche bulletin (german)

Weather Information in collaboration with **MeteoSwiss**

0900 162 138 / 338 Alpine Weather Report MeteoSwiss phone/fax
(phone: CHF 1.20/min) (fax: CHF 2.--/min)

Regional avalanche bulletins (Fr. 0.50/MMS)

LAWZCH Central Switzerland

LAWBVS Lower Valais / VD

LAWOVS Upper Valais

LAWNGR North and Central Grisons

LAWSGR South Grisons

LAWBEO Bernese Oberland

LAWEAN Eastern Part of the Northern Slope of the Alps

Internet: <http://www.slf.ch>

WAP: wap.slf.ch

Teletext: Page 782 (SF DRS)

Phone: 187 (Fr. 0.90/call and min)

Feedback information:

Email: lwp@slf.ch

Free phone/fax: 0800 800 187 / 88



On the weekend in eastern regions, it will be partly overcast, elsewhere quite sunny. In northeastern regions, a small amount of snowfall is possible on Saturday night. The danger of dry avalanches will gradually decrease. The danger of moist avalanches will continue to be subject to a daytime warming cycle. Full depth snowslides are ongoingly possible.

National avalanche bulletin as an MMS (Fr. 0.50/MMS)

Send an SMS with the corresponding key word to the speed dial number 162.

LAWINE overview of the keywords
LAWCHD national avalanche bulletin (german)

Weather Information in collaboration with MeteoSwiss

0900 162 138 / 338 Alpine Weather Report MeteoSwiss phone/fax
(phone: CHF 1.20/min) (fax: CHF 2.--/min)

Regional avalanche bulletins (Fr. 0.50/MMS)

LAWZCH Central Switzerland
LAWBVS Lower Valais / VD
LAWOVS Upper Valais
LAWNGR North and Central Grisons
LAWSGR South Grisons
LAWBEO Bernese Oberland
LAWEAN Eastern Part of the Northern Slope of the Alps

Internet: <http://www.slf.ch>

WAP: wap.slf.ch

Teletext: Page 782 (SF DRS)

Phone: 187 (Fr. 0.90/call and min)

Feedback information:

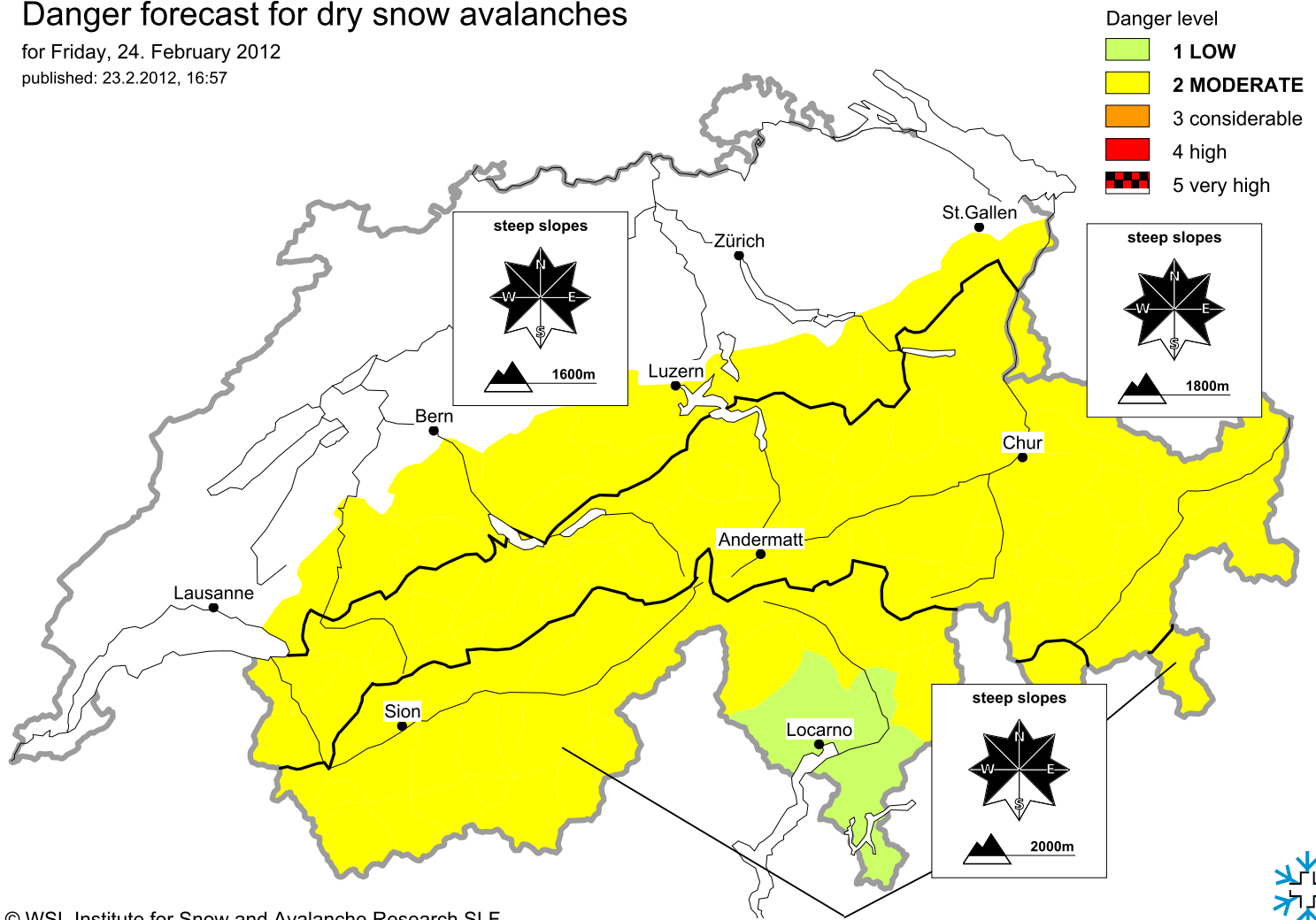
Email: lwp@slf.ch

Free phone/fax: 0800 800 187 / 88

Danger forecast for dry snow avalanches

for Friday, 24. February 2012

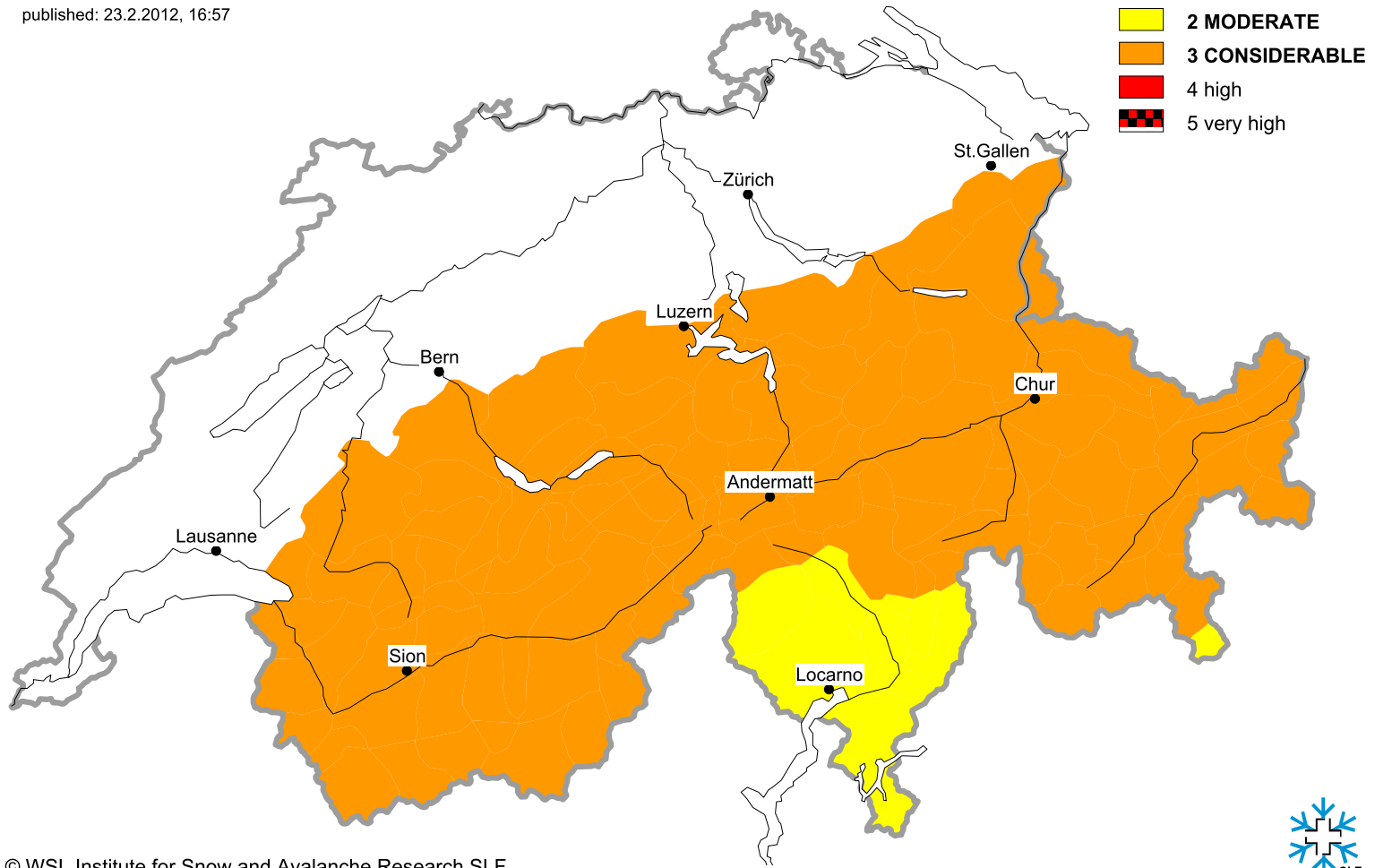
published: 23.2.2012, 16:57



Danger of wet snow avalanches in the course of the day

for Friday, 24. February 2012

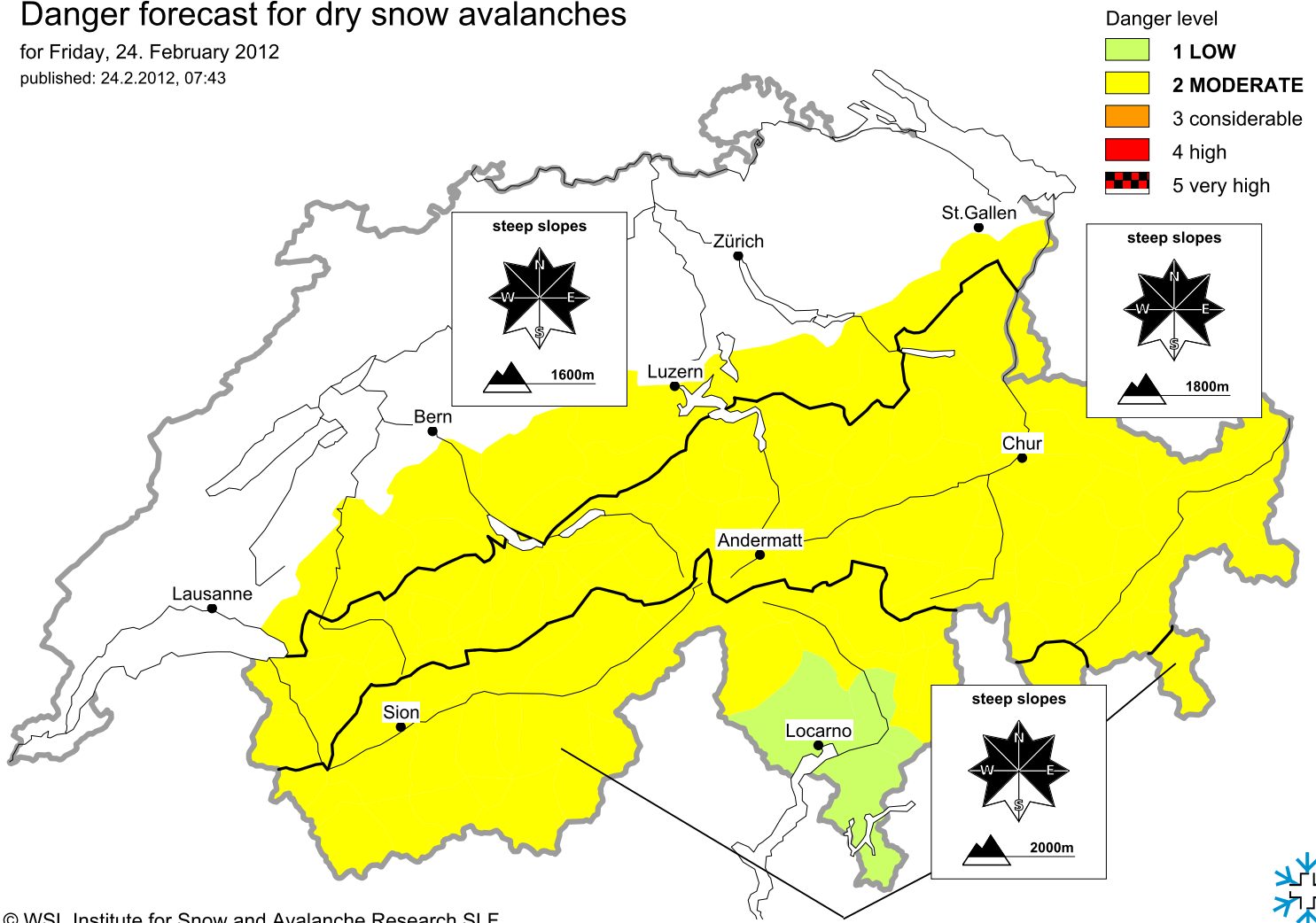
published: 23.2.2012, 16:57



Danger forecast for dry snow avalanches

for Friday, 24. February 2012

published: 24.2.2012, 07:43



Danger of wet snow avalanches in the course of the day

for Friday, 24. February 2012

published: 24.2.2012, 07:44

