

# National avalanche bulletin no. 100

for Sunday, 4 March 2012

issue date 3.3.2012, 18:30 hours

## *Increasing avalanche danger throughout the day*

### Current conditions

Skies were clear on Friday night. During the day on Saturday, it was sunny. In the afternoon, clouds moved in from the west. The midday temperatures were plus 3 degrees in northern regions and plus 8 degrees in southern regions. Light winds were blowing.

On steep, south facing slopes below about 2500 m, and on north facing slopes below about 1600 m, the snowpack is thoroughly wet. On east, south and west facing slopes, the snowpack surface is moist up to over 3000 m; following a clear night, it is capable of bearing loads. North facing slopes are dry far and wide above the treeline and have powder snow in some places. Snowpack stability tests demonstrate isolated weak layers in the uppermost part of the snowpack on north facing slopes in particular.

### Short-term development

On Saturday night it will be only partially clear, thus reducing the outgoing nocturnal radiation somewhat. In many places on east, south and west facing slopes, however, the snowpack may well freeze and become capable of bearing loads. During the day on Sunday, it will be quite sunny. In the course of the afternoon, clouds will move in from the west. The midday temperature at 2000 m will drop to zero degrees. Light winds will be blowing.

### Avalanche danger forecast for Sunday

Central Grisons; Schanfigg; Davos; Silvretta; Lower Engadine; Münstertal:

*Moderate danger of dry avalanches (Level 2)*

The avalanche prone locations are to be found on steep slopes, in northwestern to northern to northeastern aspects in particular, above approximately 2400 m. In the layers of snow nearest the surface, isolated avalanches can be triggered primarily through large additional loading. Very steep north facing slopes should be evaluated with great care and descended singly.

Northern flank of the Alps; Valais; northern and central Ticino; remaining Grisons:

*Low danger of dry avalanches (Level 1)*

Isolated avalanche prone locations are to be found primarily in extremely steep terrain. Extremely steep slopes should be descended singly and the danger of falling should be taken into consideration.

In all regions of the Swiss Alps, the danger of wet snow avalanches tends to increase slightly, and the peril of full depth snowslides to escalate significantly, through the solar radiation. On the northern flank of the Alps, in the Valais not including the regions of Saas Fee and not including the southern Simplon region, in northern and central Grisons and in the Lower Engadine, the avalanche danger level will increase to Level 3 (considerable); in the remaining regions it will ascend to Level 2 (moderate). Naturally triggered avalanches can be expected on steep, east to south to west facing slopes below about 2600 m; on steep, north facing slopes, they are possible below about 1800 m. The avalanches may well reach medium size and can place exposed sections of transportation routes at risk. Backcountry skiing and freeriding tours should be brought to a close early in the day. Full depth snowslides are possible even during the night and during the morning hours. Caution is urged below glide cracks in the snowpack.

### Trend for Monday and Tuesday

On both days it will be overcast, accompanied by bright intervals in western regions on Tuesday. By Tuesday morning, as much as 30 cm of snowfall is possible in southern regions and in Grisons; in the remaining regions, less. The snowfall level will drop from 1400 m down to low lying areas. On Monday, the wind will be blowing at intermittently strong velocity from the southwest, then shift to northeasterly. The danger of dry avalanches is expected to increase slightly on Monday. Full depth snowslides continue to be possible.

#### National avalanche bulletin as an MMS (Fr. 0.50/MMS)

Send an SMS with the corresponding key word to the speed dial number 162.

LAWINE overview of the keywords  
LAWCHD national avalanche bulletin (german)

Weather Information in collaboration with **MeteoSwiss**

0900 162 138 / 338 Alpine Weather Report MeteoSwiss phone/fax  
(phone: CHF 1.20/min) (fax: CHF 2.--/min)

#### Regional avalanche bulletins (Fr. 0.50/MMS)

LAWZCH Central Switzerland  
LAWBVS Lower Valais / VD  
LAWOVS Upper Valais  
LAWNGR North and Central Grisons  
LAWSGR South Grisons  
LAWBEO Bernese Oberland  
LAWEAN Eastern Part of the Northern Slope of the Alps

**Internet:** <http://www.slf.ch>

**WAP:** [wap.slf.ch](http://wap.slf.ch)

**Teletext:** Page 782 (SF DRS)

**Phone:** 187 (Fr. 0.90/call and min)

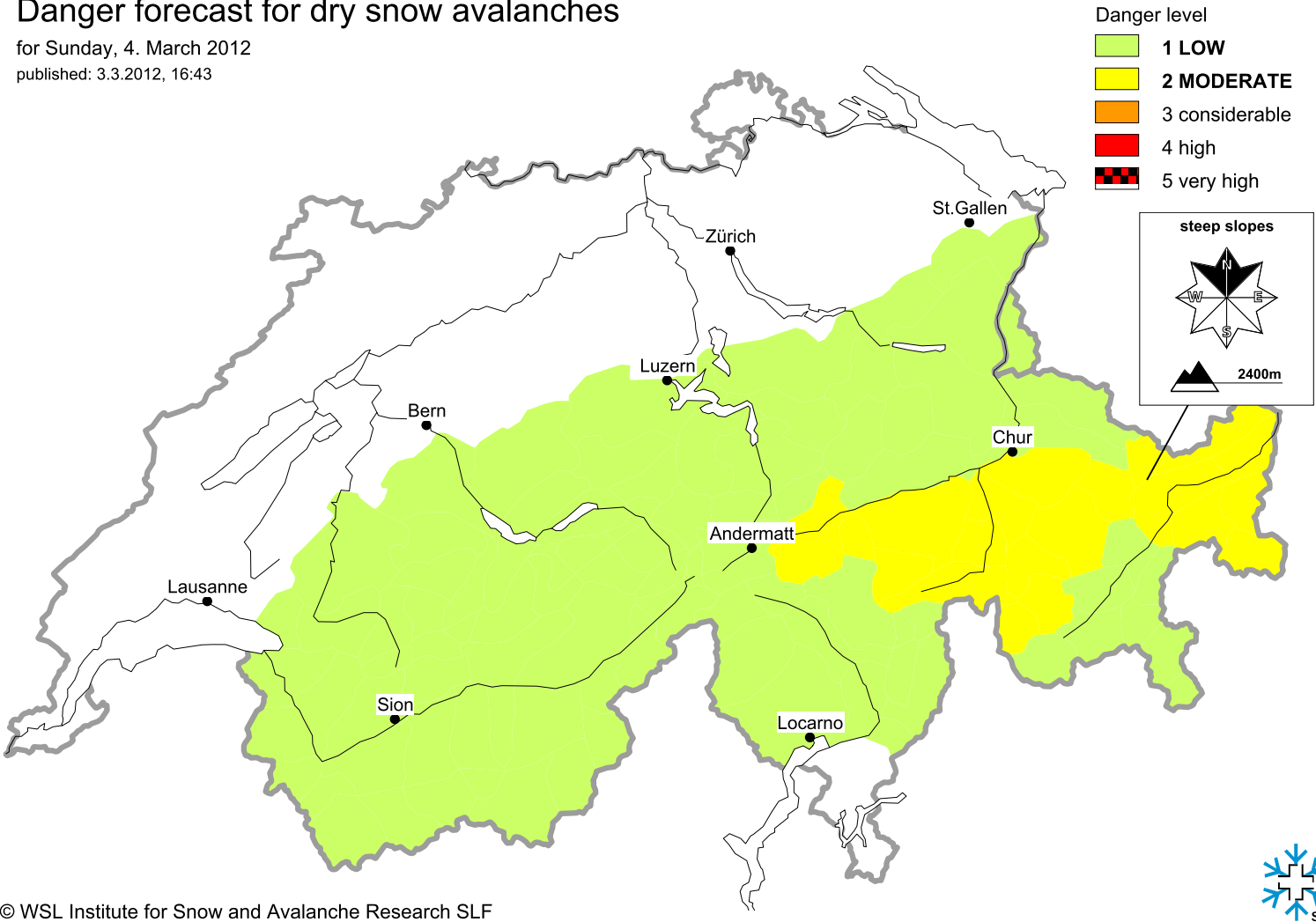
**Feedback information:**

Email: [lawp@slf.ch](mailto:lawp@slf.ch)

Free phone/fax: 0800 800 187 / 88

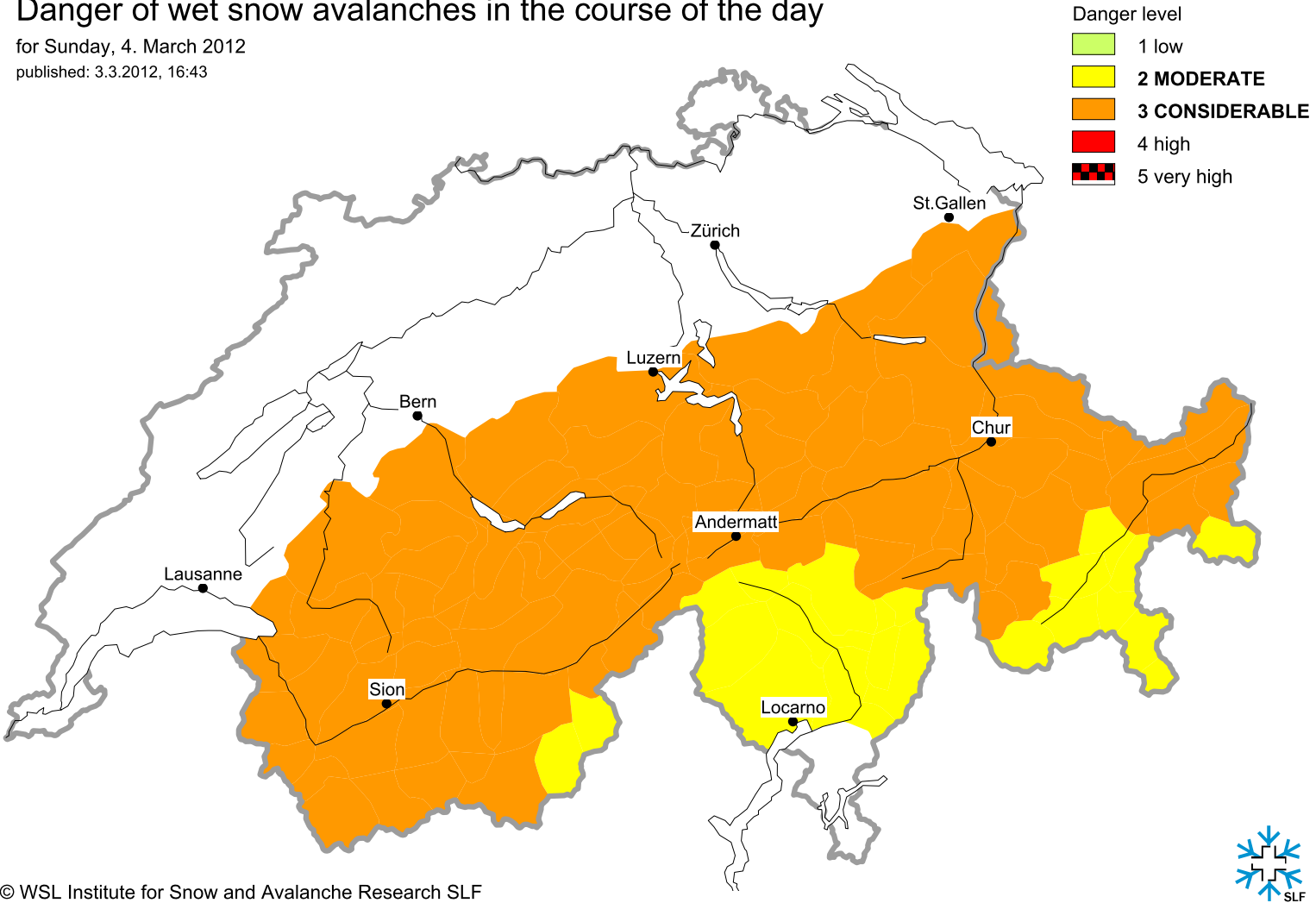
# Danger forecast for dry snow avalanches

for Sunday, 4. March 2012  
published: 3.3.2012, 16:43



# Danger of wet snow avalanches in the course of the day

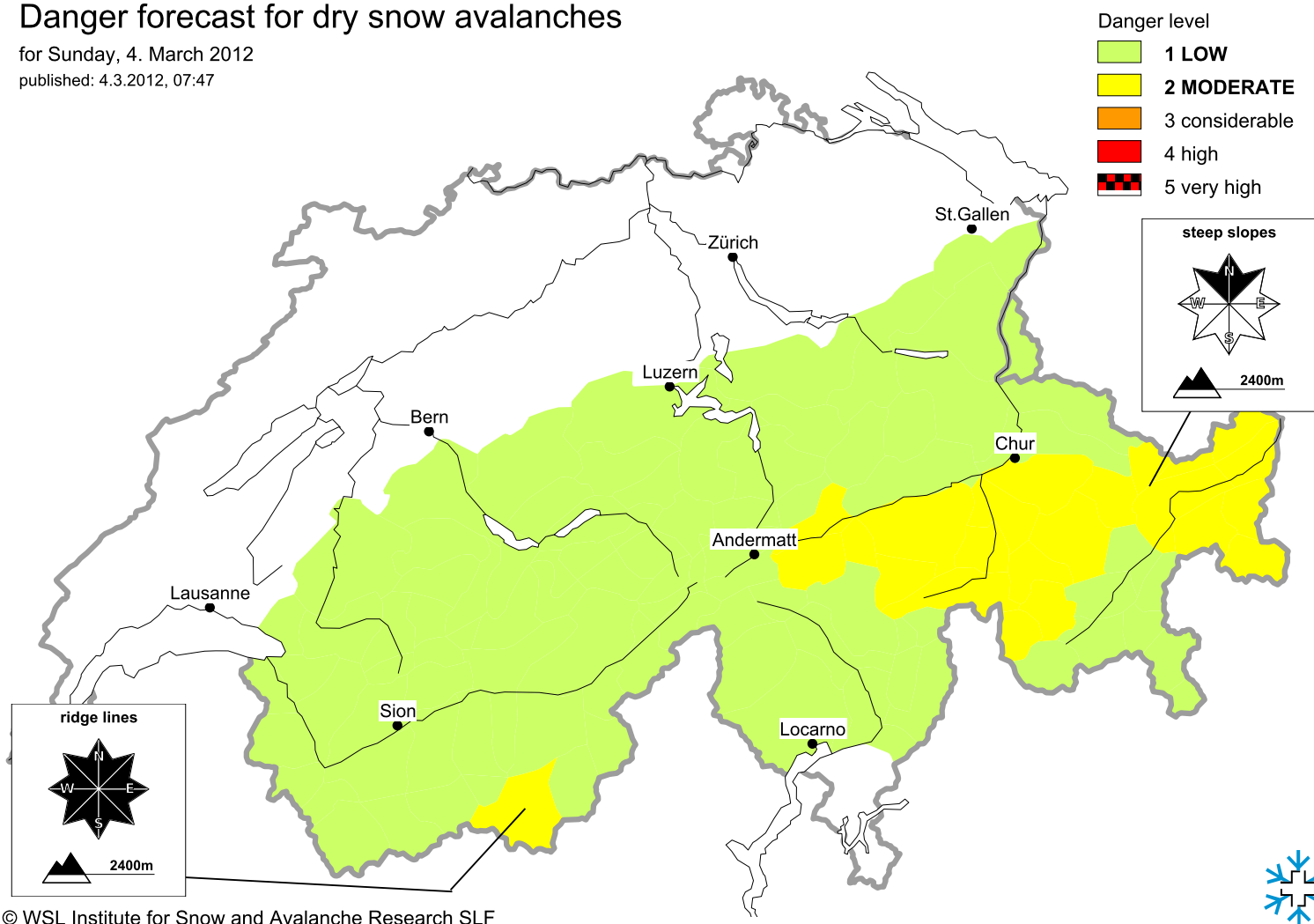
for Sunday, 4. March 2012  
published: 3.3.2012, 16:43



# Danger forecast for dry snow avalanches

for Sunday, 4. March 2012

published: 4.3.2012, 07:47



# Danger of wet snow avalanches in the course of the day

for Sunday, 4. March 2012

published: 4.3.2012, 07:47

