

# National avalanche bulletin no. 119

for Friday, 23 March 2012

issue date 22.3.2012, 18:30 hours

## *Considerable avalanche danger from region to region*

### Current conditions

On Wednesday night, the skies were clear. During the day on Thursday it was predominantly sunny. The midday temperature at 2000 m was plus 4 degrees. The southerly wind was blowing at predominantly light to moderate velocity, winds were intermittently strong at high altitudes.

The new fallen and drifted snow from the last few days is still prone to triggering in some places on north facing slopes in particular. This is especially the case on the Main Alpine Ridge, where avalanches were triggered by backcountry skiers and freeriders.

In places where the snow is shallow, the snowpack is faceted and weak in some areas. Elsewhere the more deeply embedded layers of the snowpack are generally well consolidated and evidence next to no pronounced weak layers. On steep, north facing slopes above approximately 2300 m, the snowpack surface is still loosely packed.

The snow level on south facing slopes lies at approximately 1500 m in western and southern regions; in northeastern regions it lies at approximately 1200 m. On north facing slopes, it is about 500 m lower.

### Short-term development

On Thursday night, skies will be predominantly clear. A crust will form which will be capable of bearing loads on south facing slopes and will be breakable in some places on east and west facing slopes. During the day on Friday, it will be quite sunny, apart from a few cloudbanks in western regions. The midday temperature at 2000 m will be plus 3 degrees. The wind will be blowing at light velocity, for the most part.

### Avalanche danger forecast for Friday

Main Alpine Ridge from Nufenen Pass into the Upper Engadine:

#### *Considerable avalanche danger (Level 3)*

The avalanche prone locations are to be found primarily on steep slopes in northwestern to northern to northeastern aspects above approximately 2200 m. Avalanches can be triggered by a single backcountry skier or freerider in places where there are older snowdrift layers, more than anywhere else. These layers generally fracture at the transition point to a faceted old snowpack. In addition, avalanches can be triggered in the old snowpack in isolated cases, particularly in places where the snow is shallow. Experience in evaluating the avalanche danger is imperative.

Northern flank of the Alps not including Urseren; Valais; Grisons not including the Main Alpine Ridge from Oberalp Pass into the Upper Engadine; regions south of the Main Alpine Ridge:

#### *Moderate avalanche danger (Level 2)*

The avalanche prone locations are to be found primarily on steep slopes in western to northern to eastern aspects. On the northern flank of the Alps not including Urseren, as well as in the regions south of the Main Alpine Ridge, the danger zones are above approximately 2000 m; in the remaining regions of this danger level the hazardous zones are above approximately 2200 m. Older snowdrift accumulations in particular require special care in assessment, as well as slopes which are steep, shady and have shallow snow. In the regions of the Main Alpine Ridge in particular, avalanches can be triggered even by a single backcountry skier or freerider in isolated cases. A cautious route selection is essential.

In all regions of the Swiss Alps, naturally triggered, wet snowslides and wet snow avalanches can be expected during the course of the day. This is particularly the case on sun-drenched slopes below about 2800 m. Full depth snowslides which can reach medium size continue to be possible. Caution is urged below glide cracks in the snowpack.

### Trend for Saturday and Sunday

On both days it will be quite sunny, apart from a few cloudbanks. The danger of dry avalanches will continue to decrease. The danger of wet snow avalanches and full depth snowslides is expected to increase over the course of each day.

#### National avalanche bulletin as an MMS (Fr. 0.50/MMS)

Send an SMS with the corresponding key word to the speed dial number 162.

LAWINE overview of the keywords  
LAWCHD national avalanche bulletin (german)

Weather Information in collaboration with **MeteoSwiss**

0900 162 138 / 338 Alpine Weather Report MeteoSwiss phone/fax  
(phone: CHF 1.20/min) (fax: CHF 2.--/min)

#### Regional avalanche bulletins (Fr. 0.50/MMS)

LAWZCH Central Switzerland  
LAWBVS Lower Valais / VD  
LAWOVS Upper Valais  
LAWNGR North and Central Grisons  
LAWSGR South Grisons  
LAWBEO Bernese Oberland  
LAWEAN Eastern Part of the Northern Slope of the Alps

**Internet:** <http://www.slf.ch>

**WAP:** [wap.slf.ch](http://wap.slf.ch)

**Teletext:** Page 782 (SF DRS)

**Phone:** 187 (Fr. 0.90/call and min)

**Feedback information:**

Email: [lwp@slf.ch](mailto:lwp@slf.ch)

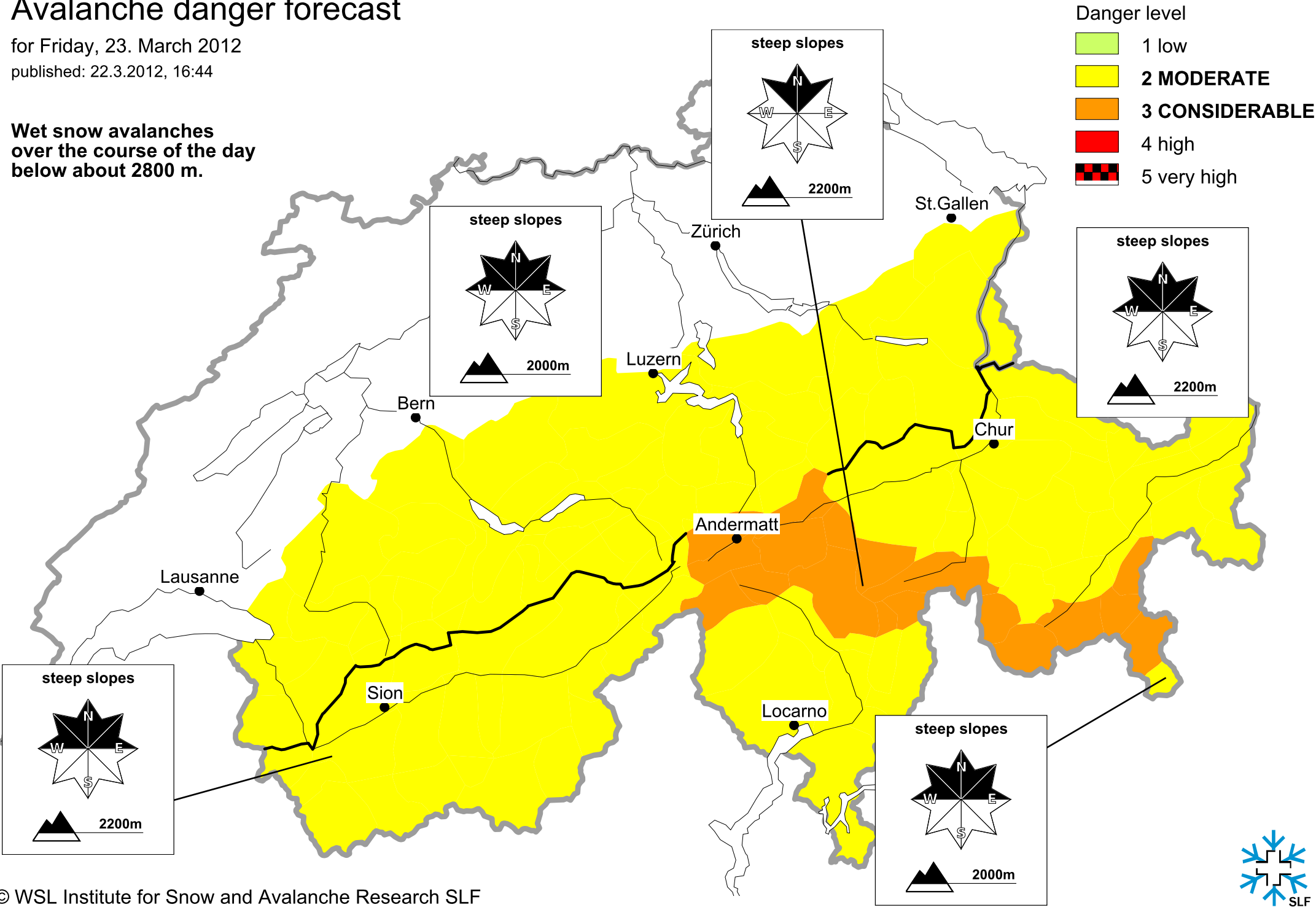
Free phone/fax: 0800 800 187 / 88

# Avalanche danger forecast

for Friday, 23. March 2012

published: 22.3.2012, 16:44

Wet snow avalanches  
over the course of the day  
below about 2800 m.



# Avalanche danger forecast

for Friday, 23. March 2012

published: 23.3.2012, 07:21

Wet snow avalanches  
over the course of the day  
below about 2800 m.

