

National avalanche bulletin no. 121

for Sunday, 25 March 2012

issue date 24.3.2012, 18:30 hours

Caution urged on steep, north facing slopes and towards wet snow avalanches during the course of the day

Current conditions

The skies were clear on Friday night. During the day on Saturday it was sunny. During the afternoon, convective cloud built up in western and southern regions in particular. The midday temperatures at 2000 m were plus 4 degrees in western and southern regions and plus 2 degrees in eastern regions. Light winds prevailed.

In areas where the snow is shallow, the snowpack is weak and faceted in some places. This is particularly the case on the Main Alpine Ridge and in the inneralpine regions of Grisons, where in isolated cases avalanches were triggered by backcountry skiers and freeriders. Otherwise, the more deeply embedded layers of the snowpack have consolidated well in general and evidence no markedly weak layers. On steep, north facing slopes above approximately 2300 m, the snowpack surface is still loosely packed in places. In western and southern regions, the snow level on south facing slopes is approximately 1500 m; in northeastern regions it is about 1200 m. On north facing slopes, it is about 500 m lower.

Short-term development

On Saturday night in northeastern regions it will be partly overcast, elsewhere skies will be predominantly clear. On steep, east, south and west facing slopes, a crust capable of bearing loads is expected to form widespread. During the day on Sunday, it will be generally sunny. In the afternoon, convective cloud is expected to build up in eastern and in southern regions in particular. The midday temperature at 2000 m will be plus 2 degrees. The wind will be blowing at light to moderate velocity from northeasterly to easterly directions.

Avalanche danger forecast for Sunday

Northern Alpine Ridge from the Wildstrubel to Liechtenstein; southern Valais; Urseren; northern and central Ticino; Grisons:

Moderate avalanche danger (Level 2)

The avalanche prone locations are to be found on steep slopes, in northwestern to northern to northeastern aspects in particular, above approximately 2200 m. Older snowdrift accumulations are still prone to triggering in isolated cases, but are usually small sized. The avalanche prone locations tend to increase in frequency with ascending altitude.

Particularly on the Main Alpine Ridge, in central Grisons and in the Upper Engadine, in addition, isolated avalanches can be triggered in more deeply embedded layers inside the snowpack, in some places even by a single backcountry skier or freerider. These avalanche prone locations are to be found primarily on north facing slopes which have been subjected to little use and where the snow is shallow. Whumpfung sounds may indicate imminent danger.

On north facing slopes in all regions of this danger level, a cautious route selection is recommended.

Northern Alpine Ridge from Chablais to the Wildstrubel; all regions north of the northern Alpine Ridge; Sotto Ceneri:

Low avalanche danger (Level 1)

Isolated avalanche prone locations are to be found primarily on very steep, shady slopes. In exposed places, the hazards of being swept along and falling should be taken into consideration.

In all regions of the Swiss Alps, the danger of wet snow avalanches and full depth snowslides is expected to increase to level 2, "moderate", over the course of the day. Naturally triggered avalanches can be expected below about 2800 m on south facing slopes; and they are possible below about 1800 m on north facing slopes. Backcountry skiing and freeriding tours should be brought to an end in plenty of time. Full depth snowslides can attain medium size and, although seldom, even release during the morning hours. Caution is urged beneath glide cracks in the snowpack.

Trend for Monday and Tuesday

On both days it is expected to be sunny and mild. The danger of dry avalanches will diminish only slowly. The danger of wet snow avalanches and full depth snowslides is expected to increase over the course of each day.

National avalanche bulletin as an MMS (Fr. 0.50/MMS)

Send an SMS with the corresponding key word to the speed dial number 162.

LAWINE overview of the keywords
LAWCHD national avalanche bulletin (german)

Weather Information in collaboration with **MeteoSwiss**

0900 162 138 / 338 Alpine Weather Report MeteoSwiss phone/fax
(phone: CHF 1.20/min) (fax: CHF 2.--/min)

Regional avalanche bulletins (Fr. 0.50/MMS)

LAWZCH Central Switzerland
LAWBVS Lower Valais / VD
LAWOVS Upper Valais
LAWNGR North and Central Grisons
LAWSGR South Grisons
LAWBEO Bernese Oberland
LAWEAN Eastern Part of the Northern Slope of the Alps

Internet: <http://www.slf.ch>

WAP: wap.slf.ch

Teletext: Page 782 (SF DRS)

Phone: 187 (Fr. 0.90/call and min)

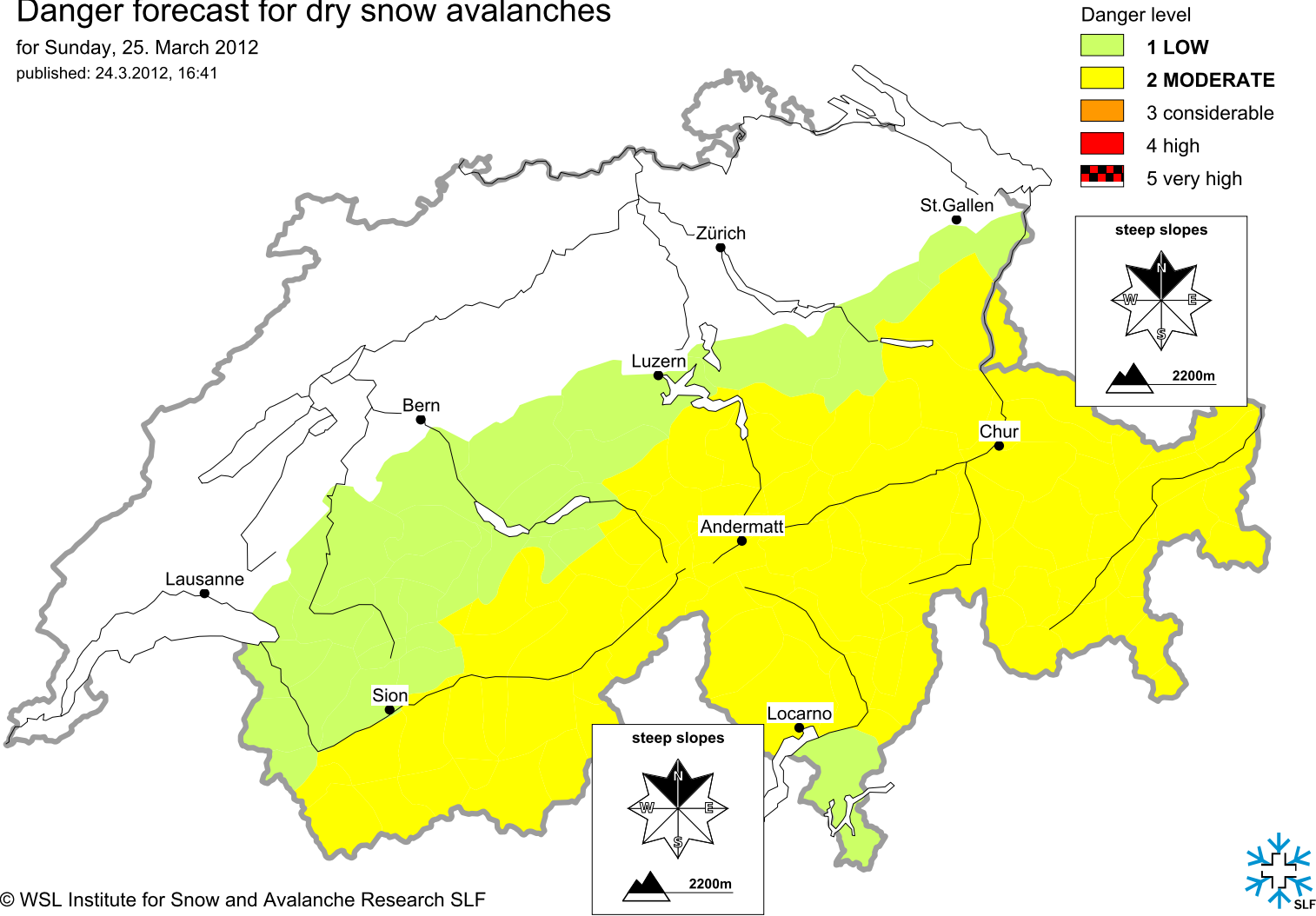
Feedback information:

Email: lwp@slf.ch

Free phone/fax: 0800 800 187 / 88

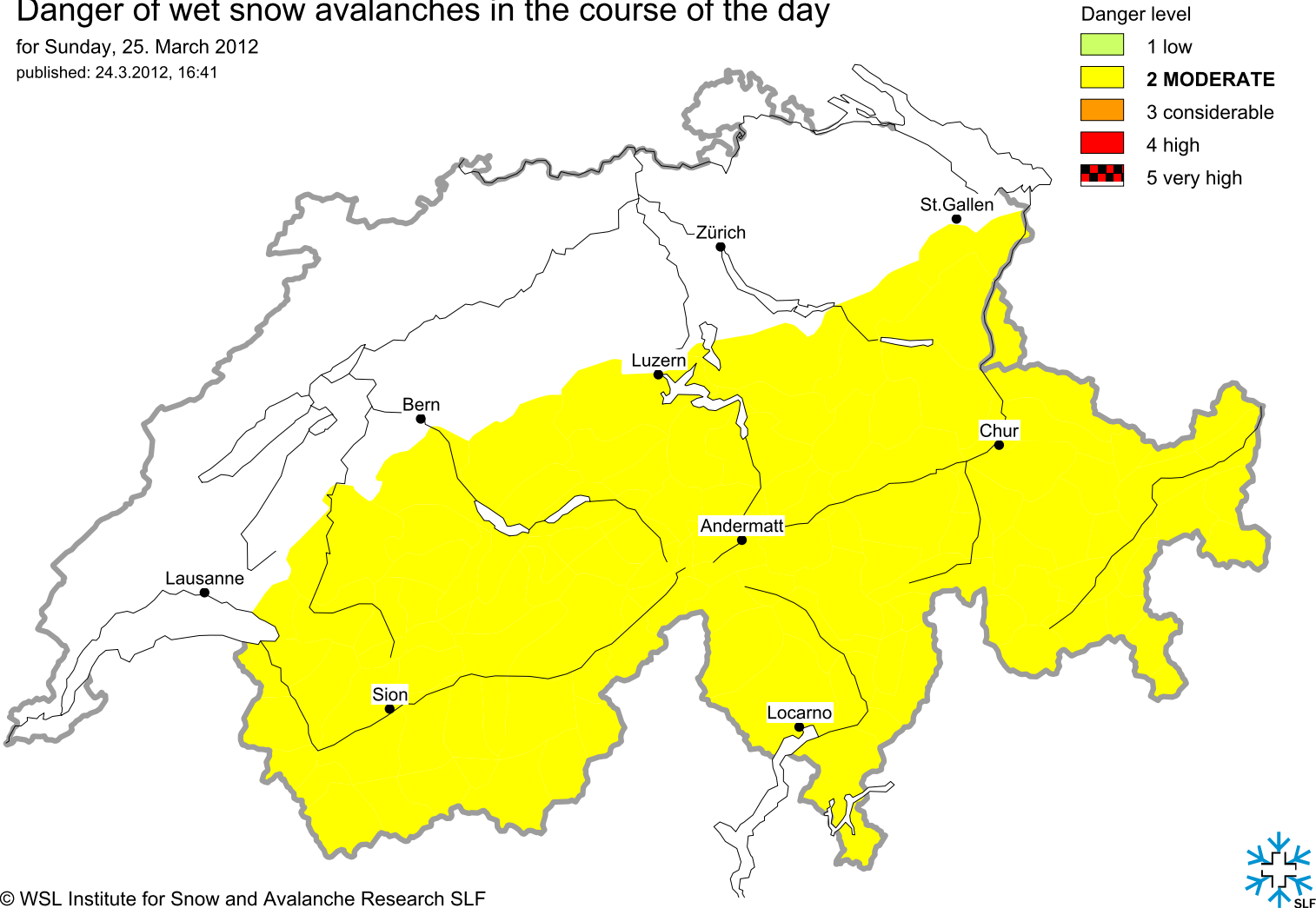
Danger forecast for dry snow avalanches

for Sunday, 25. March 2012
published: 24.3.2012, 16:41



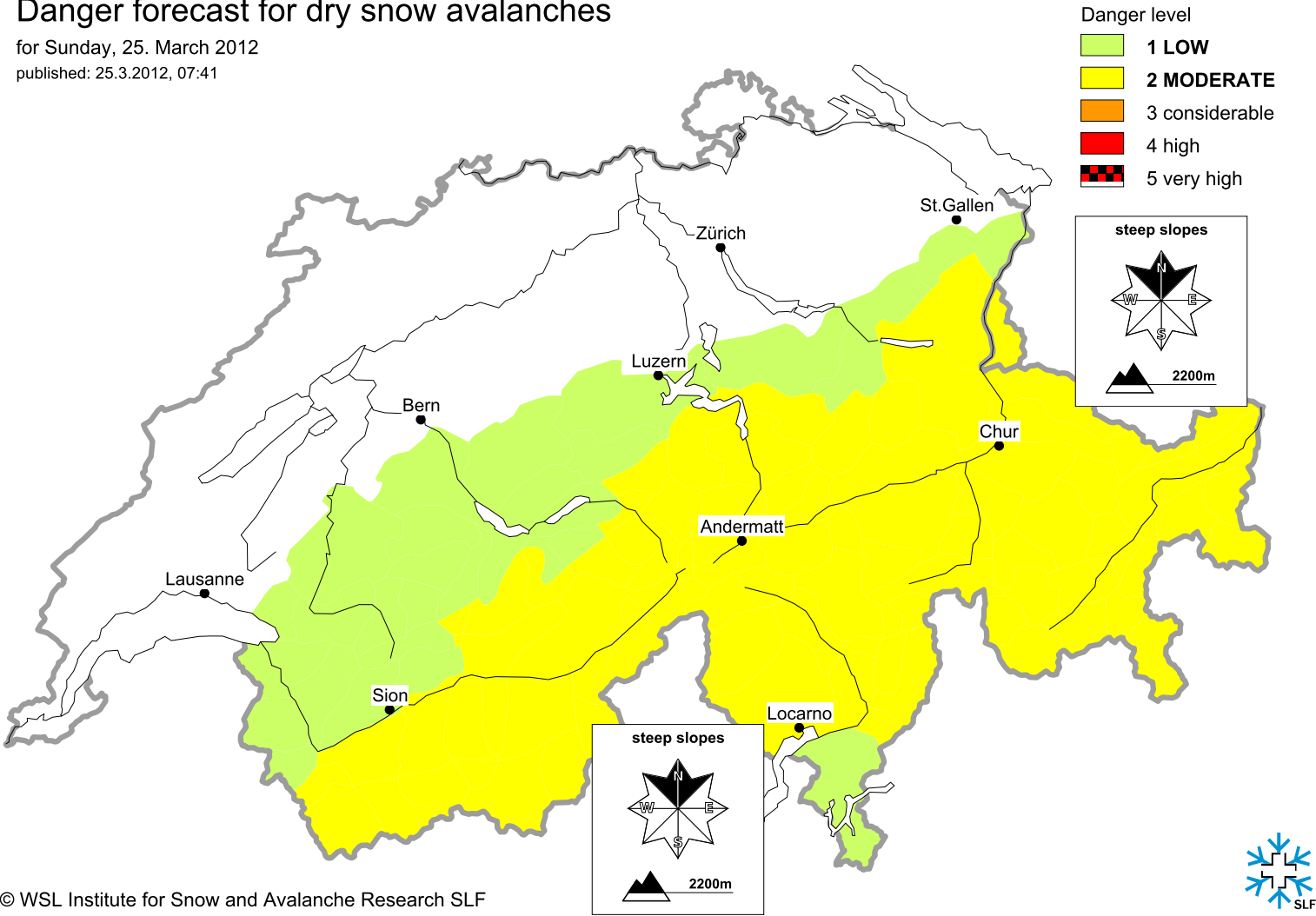
Danger of wet snow avalanches in the course of the day

for Sunday, 25. March 2012
published: 24.3.2012, 16:41



Danger forecast for dry snow avalanches

for Sunday, 25. March 2012
published: 25.3.2012, 07:41



Danger of wet snow avalanches in the course of the day

for Sunday, 25. March 2012
published: 25.3.2012, 07:41

