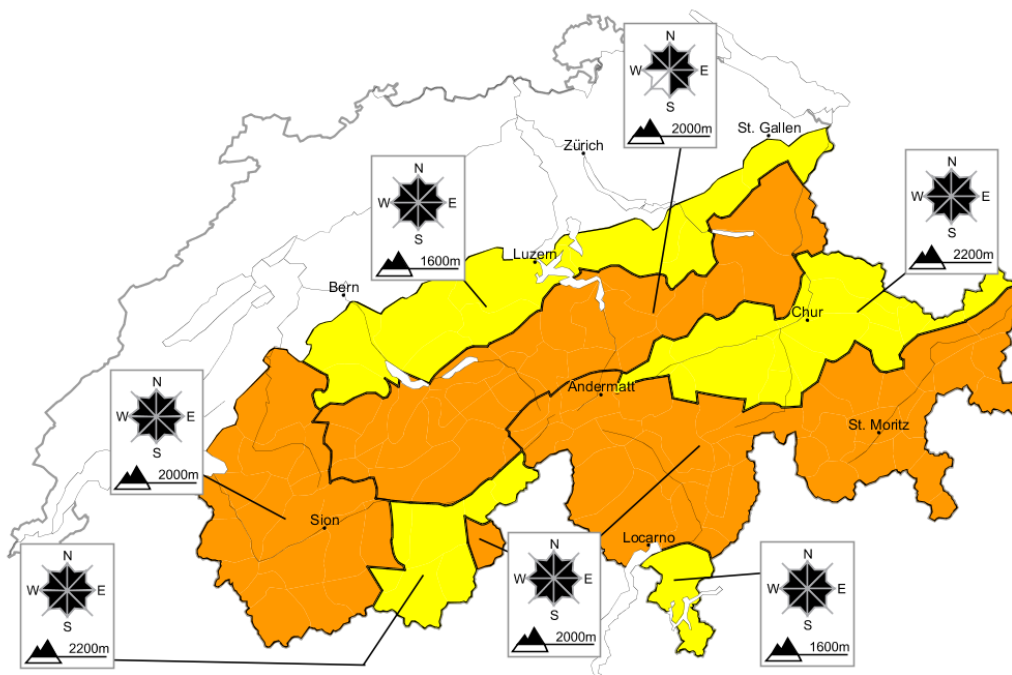


Considerable avalanche danger will be encountered over a wide area. Snow drifts require caution

Edition: 21.3.2013, 08:00 / Next update: 21.3.2013, 17:00

Avalanche danger

updated on 21.3.2013, 08:00



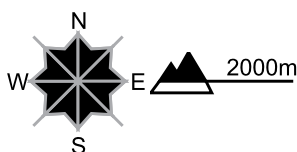
Region A

Level 3, considerable



Snow drifts

Avalanche prone locations



Danger description

The snow drift accumulations of the last few days are in some cases still prone to triggering. As a consequence of the northwesterly wind further snow drift accumulations will form. These can be released easily, even by a single winter sport participant. Whumpung sounds and the formation of shooting cracks when stepping on the snowpack can indicate the danger. Off-piste activities call for experience in the assessment of avalanche danger.

Wet avalanches as day progresses

As a consequence of warming during the day and solar radiation moist snow slides and avalanches are possible. This applies in particular on steep sunny slopes below approximately 2200 m.

Danger levels

1 low

2 moderate

3 consider.

4 high

5 very high



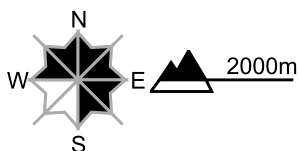
Region B

Level 3, considerable



Snow drifts

Avalanche prone locations



Danger description

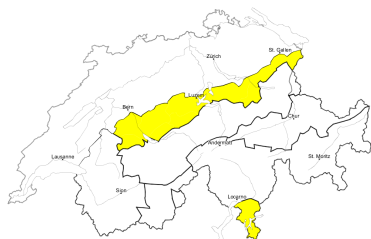
The snow drift accumulations of the last few days are in some cases still prone to triggering. As a consequence of the northwesterly wind further snow drift accumulations will form. These can be released by a single winter sport participant. Off-piste activities call for experience in the assessment of avalanche danger.

Wet avalanches as day progresses

As a consequence of warming during the day and solar radiation moist snow slides and avalanches are possible. This applies in particular on steep sunny slopes below approximately 2200 m.

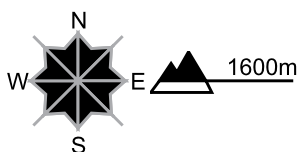
Region C

Level 2, moderate



Snow drifts

Avalanche prone locations



Danger description

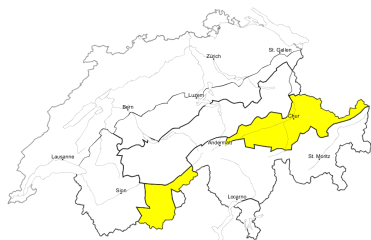
Fresh and somewhat older snow drift accumulations are mostly small but can in some cases be released easily. They are to be found in particular adjacent to the ridge line and in gullies and bowls. Careful route selection is recommended.

Wet avalanches as day progresses

As a consequence of warming during the day and solar radiation moist snow slides and avalanches are possible. This applies in particular on steep sunny slopes.

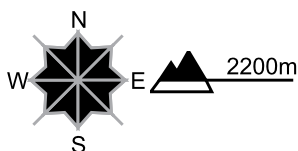
Region D

Level 2, moderate



Snow drifts

Avalanche prone locations



Danger description

The snow drift accumulations of the last few days are in some cases still prone to triggering. As a consequence of the northwesterly wind further snow drift accumulations will form. At elevated altitudes avalanche prone locations are more prevalent and the danger is greater. Avalanches can be released in near-surface layers, even by small loads in isolated cases. Backcountry touring and other off-piste activities call for defensive route selection.

Wet avalanches as day progresses

As a consequence of warming during the day and solar radiation moist snow slides and avalanches are possible. This applies in particular on steep sunny slopes below approximately 2200 m.

Snowpack and weather

updated on 20.3.2013, 17:00

Snowpack

As a result of the snowfall at the beginning of the week, extensive snowdrift accumulations formed which have been blanketed by fresh fallen snow in the interim. They are still prone to triggering to some extent. In addition, fresh, trigger sensitive snowdrift accumulations have been deposited in areas adjacent to ridgelines, in gullies and bowls more than anywhere else. The major peril stems from these layers of snow nearest the uppermost surface of the snowpack. The old snow cover is favourably structured far and wide. Weak, faceted layers embedded inside the old snowpack occur in the inneralpine regions of the Valais, in central Grisons as well as in the Engadine and in Val Müstair in particular. Over the last few days, however, there have been next to no avalanches fracturing deep into the old snow cover.

Observed weather on Wednesday, 20.3.2013

Skies were heavily overcast in general, with bright interims particularly in the central and eastern sectors of the northern flank of the Alps, as well as in southern Valais. In western and southern regions there was a small amount of snowfall. The snowfall level was at 800 m.

Fresh snow

In western and southern regions, 5-15 cm from place to place

Temperature

At midday at 2000m, -4° C

Wind

Light to moderate, particularly in northwestern regions and in the Engadine also intermittently strong velocity southerly to southwesterly winds

Weather forecast until Thursday, 21.3.2013

During the night on the northern flank of the Alps more than anywhere else there will be some snowfall. The snowfall level will be at 600 m. During the day in western and in southern regions it will be predominantly sunny. In northern and in eastern regions skies will still be overcast in the morning, accompanied by snow showers, then during the course of the day turn increasingly sunny from the west.

Fresh snow

Northern flank of the Alps, Valais, Grisons: 5-10 cm; from place to place on the northern flank of the Alps 15 cm

Temperature

At midday at 2000 m, in northern regions -6° C, in southern regions -4° C

Wind

Moderate westerly to northwesterly winds, in southern regions and in high alpine regions in general, strong velocity northwesterly winds

Outlook until Saturday, 23.3.2013

On Friday it will be predominantly sunny accompanied by cloudbanks in northern regions. Temperatures are expected to rise significantly. On Saturday it will turn increasingly cloudy in the Valais and in southern regions, accompanied by light snowfall. In northern regions it will be partly sunny, amidst a tendency towards foehn wind conditions. The danger of dry avalanches is expected to subside. The danger of wet avalanches is expected to increase over the course of each day. The danger of full depth snowslides will increase.