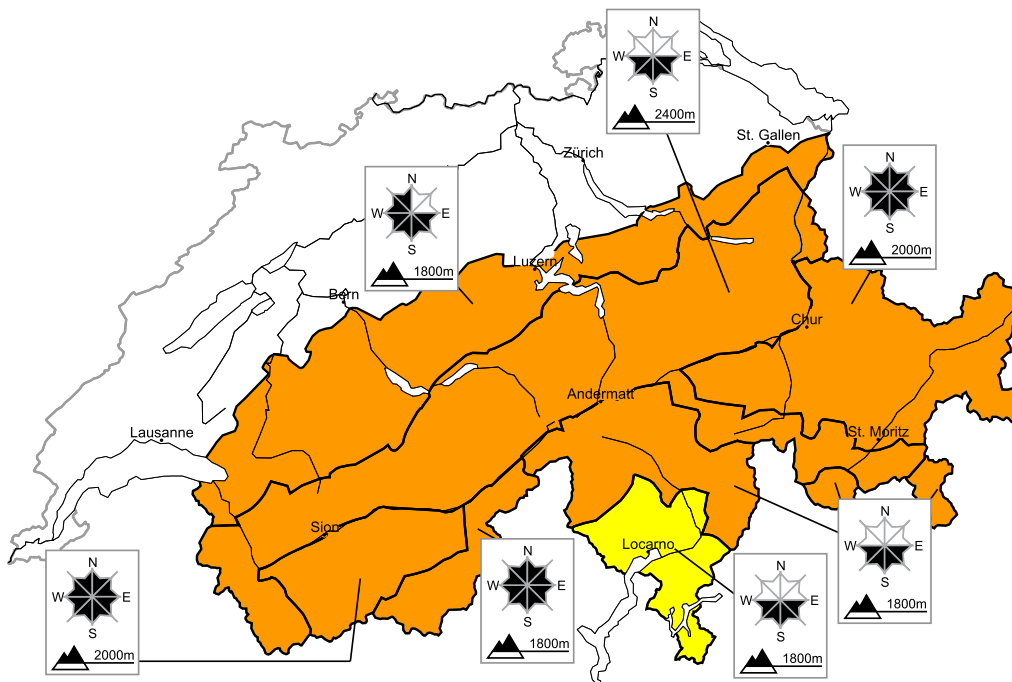


# Considerable avalanche danger will be encountered over a wide area. Snow drifts are to be avoided

Edition: 8.2.2015, 08:00 / Next update: 8.2.2015, 17:00

## Avalanche danger

updated on 8.2.2015, 08:00



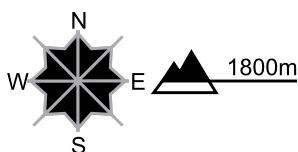
**region A**

**Level 3, considerable**



### Fresh snow and snow drifts

#### Avalanche prone locations



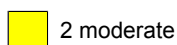
#### Danger description

The fresh snow and snow drift accumulations are poorly bonded with the old snowpack. Even single snow sport participants can release avalanches easily, including medium-sized ones. Natural avalanches are possible. The conditions are precarious for snow sport activities outside marked and open pistes.

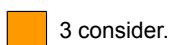
**Danger levels**



1 low



2 moderate



3 consider.



4 high



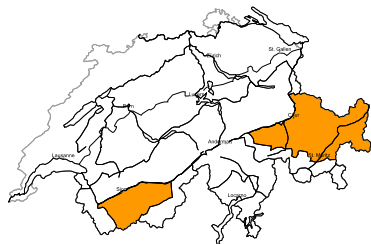
5 very high



WSL Institute for Snow and  
 Avalanche Research SLF  
 www.slf.ch

region B

Level 3, considerable



Old snow, snow drifts

Avalanche prone locations



Danger description

Avalanches can be released in the weakly bonded old snow in particular in little used backcountry terrain. Whumphing sounds and the formation of shooting cracks when stepping on the snowpack serve as an alarm indicating the danger. Avalanches can reach medium size in isolated cases.

As a consequence of the sometimes storm force wind avalanche prone snow drift accumulations will form. This applies in particular above approximately 2500 m. The fresh snow drift accumulations are to be avoided as far as possible.

Backcountry touring and other off-piste activities call for experience in the assessment of avalanche danger and caution.

Full-depth avalanches

Prättigau: Small and medium-sized full-depth avalanches are possible on cut and grassy slopes, in particular at low and intermediate altitudes. Caution is to be exercised in areas with glide cracks.

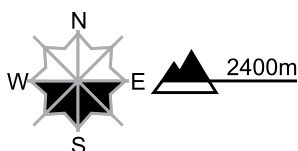
region C

Level 3, considerable



Snow drifts, old snow

Avalanche prone locations



Danger description

At elevated altitudes avalanche prone snow drift accumulations will form. These can be released by a single winter sport participant. Avalanches can additionally be released in deeper layers in isolated cases. Ski touring and other off-piste activities, including snowshoe hiking, call for experience in the assessment of avalanche danger.

Full-depth avalanches

North of a line between the Rhone and Rhine as well as Lower Valais: Small and medium-sized full-depth avalanches are possible on cut and grassy slopes, in particular at low and intermediate altitudes. Caution is to be exercised in areas with glide cracks.

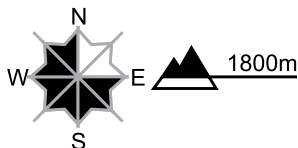
**region D**

**Level 3, considerable**



**Snow drifts, old snow**

**Avalanche prone locations**



**Danger description**

As a consequence of the sometimes strong wind easily released snow drift accumulations will form. These are to be bypassed in steep terrain. Avalanches can additionally be released in deeper layers in isolated cases. Ski touring and other off-piste activities, including snowshoe hiking, call for experience in the assessment of avalanche danger and careful route selection.

**Full-depth avalanches**

Small and medium-sized full-depth avalanches are possible on cut and grassy slopes. Caution is to be exercised in areas with glide cracks.

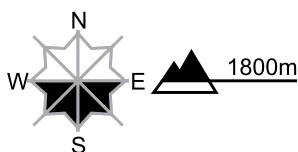
**region E**

**Level 3, considerable**



**Snow drifts**

**Avalanche prone locations**



**Danger description**

As a consequence of the northerly wind easily released snow drift accumulations will form. These are to be bypassed in steep terrain. Ski touring and other off-piste activities, including snowshoe hiking, call for experience in the assessment of avalanche danger and careful route selection.

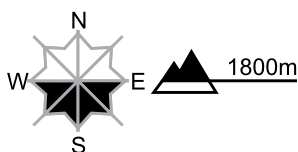
**region F**

**Level 2, moderate**



**Snow drifts**

**Avalanche prone locations**



**Danger description**

As a consequence of the northerly wind easily released snow drift accumulations will form. These are small. They are to be evaluated with care and prudence. Ski touring and other off-piste activities, including snowshoe hiking, call for careful route selection.

## Snowpack and weather

updated on 7.2.2015, 17:00

### Snowpack

As a result of strong velocity winds, snowdrift accumulations which are prone to triggering are being formed, more than anywhere else in areas adjacent to ridgelines and at high altitudes in general.

The new fallen and newly drifted snow in the region of Zermatt, Saas Fee and Simplon have not yet bonded adequately with the old snow cover and are prone to triggering.

The deep layers of snow which fell or were redistributed over the course of last week are continuing to settle and consolidate. However, in some regions they were deposited on top of a layer of surface hoar or atop other weakened layers of snow. Particularly in southern Valais and in northern and central Grisons, avalanches can fracture down deeper inside the old, weakened snowpack and release greater masses. On the northern flank of the Alps the snows blanketing the weakened layers are themselves so thick in most cases that avalanches can currently be triggered there only by large additional loading, and in places where the snow tends to be more shallow. On the southern flank of the Alps the snow structuring is by and large more favourable.

### Observed weather on Saturday, 7.2.2015

Tenacious fog prevailed up as far as approximately 1500 to 1800 m, on both northern and southern flanks of the Alps and also in the Alpine valleys. Above that altitude it was sunny.

#### Fresh snow

-

#### Temperature

At midday at 2000 m, between -2 °C in northern regions and -5 °C in southern regions

#### Wind

- During the night, in the northern sector of the Alpine Ridge more than anywhere else, as well as in the Jura, moderate to strong velocity southeasterly to easterly winds were blowing.
- During the day, strong winds were blowing in some places of the northern Prealps, in other regions blowing at light to moderate strength, from easterly to northeasterly directions.

### Weather forecast through Sunday, 8.2.2015

In northeastern regions, skies are expected to be overcast and there will be a small amount of snowfall. In western and southern regions it will be sunny.

#### Fresh snow

Central and eastern sectors of the northern flank of the Alps, northern and central Grisons: only a few centimeters of fresh fallen snow

#### Temperature

At midday at 2000 m, between -8 °C in western and southern regions and -12 °C in northeastern regions

#### Wind

- Above approximately 2500 m, as well as on the southern flank of the Alps (including at lower altitudes): strong to storm-velocity northerly winds
- western Prealps and Jura: moderate to strong velocity westerly winds

**Outlook** through Tuesday, 10.2.2015

**Monday**

In western and southern regions it will be rather sunny. In northeastern regions skies will be partially cloudy and a small amount of additional snowfall is anticipated. The northerly winds are expected to slacken off somewhat. The avalanche danger is not expected to change significantly.

**Tuesday**

It will be sunny, temperatures are expected to rise, and the winds will slacken off significantly. The avalanche danger will incrementally diminish.